



**Kahr**<sup>®</sup>  
Firearms Group

# PRODUCT CATALOG

SECOND EDITION



**DESERT EAGLE**



“A WELL-REGULATED MILITIA BEING NECESSARY TO THE SECURITY OF A FREE STATE, THE RIGHT OF THE PEOPLE TO KEEP AND BEAR ARMS SHALL NOT BE INFRINGED.”

- United States Constitution Bill of Rights 2nd Amendment -

---

MADE WITH PRIDE IN THE U.S.A.



**KAHR ARMS**

GEN2 Premium	<u>4</u>
GEN2 TP Models	<u>5</u>
GEN2 P Models	<u>6</u>
GEN2 Key Features	<u>7</u>
Premium Series	<u>8</u>
T Models	<u>9</u>
P Models	<u>10</u>
K Models	<u>11</u>
PM Models	<u>12</u>
MK Models	<u>13</u>
Value Series	<u>14</u>
CT Models	<u>15</u>
CW Models	<u>16</u>
CM Models	<u>17</u>
Distributor Exclusive	<u>18</u>
Distributor Exclusive CW	<u>19</u>
Distributor Exclusive CM	<u>20</u>

**THOMPSON / AUTO-ORDNANCE**

Thompson & Auto-Ordnance History	<u>21</u>
Thompson Long Gun	<u>22</u>
Tommy Gun Gold & Hard Chrome	<u>23</u>
Thompson Long Gun T150D	<u>24</u>
Thompson Long Gun "Commando"	<u>25</u>
Thompson M1 Short Barrel Rifles	<u>26</u>
Short Barrel Rifles	<u>27</u>
Thompson Pistol	<u>28</u>
Thompson 1911 Stainless	<u>29</u>
Thompson 100th Anniversary	<u>30</u>
Auto-Ordnance 1911	<u>31</u>
Auto-Ordnance M1 Carbines	<u>32</u>
M1 Carbines Spec	<u>33</u>

**MAGNUM RESEARCH**

Magnum Research	<u>34</u>
History of Magnum Research	<u>35</u>
Desert Eagle XIX	<u>36</u>
Desert Eagle XIX IWI	<u>41</u>
Baby Desert Eagle III Polymer	<u>42</u>
Baby Desert Eagle III Steel	<u>44</u>
Baby Desert Eagle III Features	<u>45</u>
Desert Eagle 1911	<u>46</u>
Desert Eagle 1911 Stainless	<u>48</u>
BFR Short Cylinder Models	<u>50</u>
BFR Long Cylinder Models	<u>52</u>
Magnum Lite	<u>54</u>
Magnum Lite .22LR	<u>55</u>
Magnum Lite Pistol	<u>57</u>
Magnum Lite .22 Win Mag	<u>58</u>
Mountain Eagle Center Fire Rifle	<u>59</u>
Custom Guns	<u>61</u>

**ONLINE SHOP**

Kahr: Parts, Accessories and Wear	<u>62</u>
Thompson / Auto-Ordnance: Parts, Accessories and Wear	<u>64</u>
Magnum Research: Parts, Accessories and Wear	<u>66</u>

A C C U R A T E



GEN2  
PREMIUM





TP45 TP45R436RD

**.45 ACP** | **7+1 ROUND** NEW

- ▶ Barrel: 6.0"
- ▶ Length O/A: 9.0"
- ▶ Height: 5.6"
- ▶ Slide Width: 1.00"
- ▶ Weight: 24.0 oz., Magazine 2.4 oz.
- ▶ Sights: Reflex Sights Attachment Option  
TruGlo TFX sights, Green
- ▶ Trigger Pull Weight: 6.0 lbs
- ▶ Black Polymer Frame and Matte Stainless Steel Slide
- ▶ Ships with three magazines



TP9 TP9R936RD

**9 MM** | **8+1 ROUND** NEW

- ▶ Barrel: 6.0"
- ▶ Length O/A: 8.8"
- ▶ Height: 5.2"
- ▶ Slide Width: 0.9"
- ▶ Weight: 20.8 oz., Magazine 2.1 oz.
- ▶ Sights: Reflex Sights Attachment Option  
TruGlo TFX sights, Green
- ▶ Trigger Pull Weight: 6.0 lbs
- ▶ Black Polymer Frame and Matte Stainless Steel Slide
- ▶ Ships with three magazines



TP45 TP45R435

**.45 ACP** | **7+1 ROUND** NEW

- ▶ Barrel: 5.0"
- ▶ Length O/A: 8.0"
- ▶ Height: 5.6"
- ▶ Slide Width: 1.00"
- ▶ Weight: 24.0 oz., Magazine 2.4 oz.
- ▶ Sights: Reflex Sights Attachment Option  
TruGlo TFX sights, Green
- ▶ Trigger Pull Weight: 6.0 lbs
- ▶ Black Polymer Frame and Matte Stainless Steel Slide
- ▶ Ships with three magazines



TP9 TP9R935

**9 MM** | **8+1 ROUND** NEW

- ▶ Barrel: 5.0"
- ▶ Length O/A: 7.8"
- ▶ Height: 5.2"
- ▶ Slide Width: 0.9"
- ▶ Weight: 20.5 oz., Magazine 2.1 oz.
- ▶ Sights: Reflex Sights Attachment Option  
TruGlo TFX sights, Green
- ▶ Trigger Pull Weight: 6.0 lbs
- ▶ Black Polymer Frame and Matte Stainless Steel Slide
- ▶ Ships with three magazines



TP45 TP45R43

**.45 ACP** | **7+1 ROUND** NEW

- ▶ Barrel: 4.0", Polygonal rifling, 1 - 16.38 RH twist
- ▶ Length O/A: 7.0"
- ▶ Height: 5.5"
- ▶ Slide Width: 1.00"
- ▶ Weight: 21.3 oz., Magazine 2.4 oz.
- ▶ Sights: TruGlo TFX sights, Green
- ▶ Trigger Pull Weight: 6.0 lbs
- ▶ Black Polymer Frame and Matte Stainless Steel Slide
- ▶ Ships with three magazines



TP9 TP9R93

**9 MM** | **8+1 ROUND** NEW

- ▶ Barrel: 4.0", Polygonal rifling, 1 - 10 RH twist
- ▶ Length O/A: 6.8"
- ▶ Height: 5.1"
- ▶ Slide Width: 0.9"
- ▶ Weight: 18.0 oz., Magazine 2.1 oz.
- ▶ Sights: TruGlo TFX sights, Green
- ▶ Trigger Pull Weight: 6.0 lbs
- ▶ Black Polymer Frame and Matte Stainless Steel Slide
- ▶ Ships with three magazines

● Reflex Sights Attachment Option

Kahr Premium pistols have established a reputation for accuracy and quality for 20 years. Some people have asked why are Kahr Premium pistols more expensive than competitive brands. At first glance, Kahr's Premium pistols look very similar to Kahr's Value pistols, but looks can be deceptive. Kahr Premium pistols are manufactured to the highest tolerances and use the highest quality materials.

Kahr Premium pistols have match grade polygonal rifled Lothar Walther barrels which produce unparalleled accuracy and increased muzzle velocity. Kahr premium slides are machined with more design detailing and are machined from one of the highest grades of stainless steel available for firearms. Small parts like the slide stop are machined from bar stock and many of the small internal components are plated with a high tech coating for easier cleaning and longer wear. All these features more than explain the price difference between our Premium pistols and Value pistols at the retail counter.

Our new Gen2 Premium series pistols have increased the value added on our Premium pistols to an even higher level. The tolerances are tightened, serrations are machined in the front of slide (5" barrel and 6" barrel models), the trigger stroke has been shortened allowing for quicker firing rates with an integrated trigger safety, an accessory rail has been added on the frame and TruGlo® night sights on our Gen2 Premium pistols. In addition we are adding a 5 inch barrel and a 6 inch barrel with an integrated compensator to our TP Gen2 line. The 5 inch and 6 inch pistols will be optics ready. These additional features make the Kahr Gen2 Premium pistols unrivaled in accuracy among concealed carry handguns.

KAHR PREMIUM SERIES UNRIVALED IN ACCURACY.

LIFETIME WARRANTY ON THE GEN2 PREMIUM



P45 KP45R43

.45 ACP | 6+1 ROUND NEW

- ▶ Barrel: 3.5", Polygonal rifling, 1 - 16.38 RH twist
- ▶ Length O/A: 6.5"
- ▶ Height: 5.0"
- ▶ Slide Width: 1.00"
- ▶ Weight: 19.2 oz., Magazine 2 oz.
- ▶ Sights: TruGlo TFX sights, Green
- ▶ Trigger Pull Weight: 6.0 lbs
- ▶ Black Polymer Frame and Matte Stainless Steel Slide
- ▶ Ships with three magazines



P9 KP90R93

9 MM | 7+1 ROUND NEW

- ▶ Barrel: 3.5", Polygonal rifling, 1 - 10 RH twist
- ▶ Length O/A: 6.3"
- ▶ Height: 4.6"
- ▶ Slide Width: 0.9"
- ▶ Weight: 16.7 oz., Magazine 1.9 oz.
- ▶ Sights: TruGlo TFX sights, Green
- ▶ Trigger Pull Weight: 6.0 lbs
- ▶ Black Polymer Frame and Matte Stainless Steel Slide
- ▶ Ships with three magazines



# GEN2

PREMIUM

\* SHIPS WITH THREE MAGAZINES

# KAHR ULTRA-COMPACT DOUBLE ACTION ONLY HANDGUNS

## KAHR BARREL

The Kahr barrel begins its transformation from a solid round billet of high tensile strength proprietary steel, 3 inches in diameter and 30 inches long. In the temperature-controlled environment of the Lothar Walther factory, the barrel stock is gun drilled and rifled to match grade tolerances.

At the Kahr factory, the barrel stock is precisely cut to length and CNC machined. Nearly 75% of the solid steel billet is machined away to produce a single Kahr barrel. This intensive production method, providing the greatest material integrity and tightest tolerances, was chosen to assure the best quality barrel possible.

## KAHR SLIDE

Also precision computer machined, the Kahr slide is made from 416 Stainless Steel bar stock. This component is heat-treated and tempered to optimize durability.

The combination of the engineering design, quality materials, and precise manufacturing result in the slide's toughness and compact size. Kahr's slide is the slimmest design among the major pistol brands.

## KAHR SLIDE STOP PIN

Kahr Arms, a revolutionary company committed to quality, went to the extreme in researching the material for the slide stop pin. After exhaustively surveying and testing numerous unique steel alloys, a proprietary steel with unmatched toughness and elongation characteristics was selected. The material is so tough that, in order to manufacture the part, grinding operations have to be employed.

Although the material and the manufacturing process greatly increase the cost of the part, we feel that the resulting performance benefits vastly outweigh the expense incurred each time a Kahr pistol is assembled. This is just another example of Kahr's commitment to provide you with quality, unmatched at any price.



## KAHR MAGAZINE

The Kahr magazine tube is constructed of corrosive resistant 400 series Stainless Steel and heat treated to 50 Rockwell for durability. Plasma-welding the stamping to form the magazine tube gives a smooth interior surface for the "ammunition stack" to rise and feed, and creates an "unbreakable" seam. Furthermore, tumbling the magazine in the finishing process provides a smooth, consistent burr-free surface. There are no sharp edges on which to cut yourself.

Another feature, unique to Kahr magazines, is the steel slide stop pin contact insert in the magazine follower. This innovative insert assures that the follower will reliably engage the slide stop lever and lock the slide, magazine after magazine. With this feature, you do not have to be concerned with the inevitable wear that accompanies most plastic followers.



## BIG GUN PERFORMANCE IN A SMALL GUN PACKAGE

The Kahr design is original, creating the smallest package possible in four defensive calibers - .380 ACP, 9 mm, .40 S&W and .45 ACP.

The union of advanced design, quality materials and proper construction makes Kahr the smallest, thinnest, most reliable full power compact pistol.

- ▶ **RELIABILITY.** Unless the gun is 100% reliable, all else is meaningless. Kahr pistols have proven their reliability in testing by Federal, State and local agencies.
- ▶ **SIZE.** Ergonomically, the Kahr compact pistol excels. The gun is easy to shoot well, and comfortable to carry for extended periods due to its thin profile.
- ▶ **POWER.** Despite their diminutive size, Kahr pistols deliver full size ballistic performance.

Kahr Arms T Series offers a full size carry gun with a thin profile in both steel and polymer frames. Featuring a Lothar Walther 4" match grade polygonal rifled barrel and silky smooth DAO trigger, this series provides an excellent "balance-in-hand" gun.

Kahr's unique design provides you with a simple point and shoot operation available in 9mm and .40 S&W.

## KAHR PREMIUM SERIES

- ▶ SHIPS IN LOCKABLE, HARD PLASTIC CASE
- ▶ NOW SHIPPING WITH THREE MAGAZINES



T40 KT4043

**.40 S&W** | **7+1 ROUND**

- ▶ Barrel: 4.0", Polygonal rifling; 1-16 right-hand twist
- ▶ Length O/A: 6.6"
- ▶ Height: 5.0"
- ▶ Slide Width: 0.94"
- ▶ Weight: Pistol 27 oz., Magazine 2.1 oz.
- ▶ Sights: Drift adjustable, White bar-dot combat sights
- ▶ Trigger Pull Weight: 7.0 lbs
- ▶ Finish: Matte stainless steel, Hogue wood grips
- ▶ Ships with three magazines



T9 KT9093

**9 MM** | **8+1 ROUND**

- ▶ Barrel: 4.0", Polygonal rifling; 1-10 right-hand twist
- ▶ Length O/A: 6.5"
- ▶ Height: 5.0"
- ▶ Slide Width: 0.9"
- ▶ Weight: Pistol 26 oz., Magazine 2.1 oz.
- ▶ Sights: Drift adjustable, White bar-dot combat sights
- ▶ Trigger Pull Weight: 7.0 lbs
- ▶ Finish: Matte stainless steel, Hogue wood grips
- ▶ Ships with three magazines



● Night Sights Available



P45<sup>®</sup> KP4543

**.45 ACP | 6+1 ROUND**

- ▶ Barrel: 3.5", Polygonal rifling, 1 - 16.38 RH twist
- ▶ Length O/A: 6.07"
- ▶ Height: 4.8"
- ▶ Slide Width: 1.00"
- ▶ Weight: Pistol 18.5 oz., Magazine 2 oz.
- ▶ Sights: Drift adjustable, White bar-dot combat sights
- ▶ Trigger Pull Weight: 7.0 lbs
- ▶ Black Polymer Frame and Matte Stainless Steel Slide
- ▶ Ships with three magazines



P9 MA COMPLIANT KP9193

**9 MM | 7+1 ROUND**

- ▶ Barrel: 3.5", Polygonal rifling; 1 - 10 RH twist
- ▶ Length O/A: 5.8"
- ▶ Height: 4.5"
- ▶ Slide Width: 0.9"
- ▶ Weight: Pistol 15 oz., Magazine 1.9 oz.
- ▶ Sights: Drift adjustable, White bar-dot combat sights
- ▶ Trigger Pull Weight: 6.0 lbs
- ▶ Black Polymer Frame and Matte Stainless Steel Slide
- ▶ External Safety & Loaded Chamber Indicator (LCI)
- ▶ Ships with three magazines



P40<sup>®</sup> MA COMPLIANT KP4143

**.40 S&W | 6+1 ROUND**

- ▶ Barrel: 3.6", Polygonal rifling; 1 - 16 RH twist
- ▶ Length O/A: 6.1"
- ▶ Height: 4.6"
- ▶ Slide Width: 0.94"
- ▶ Weight: Pistol 16.8 oz., Magazine 1.9 oz.
- ▶ Trigger Pull Weight: 7.0 lbs
- ▶ Sights: Drift adjustable, White bar-dot combat sights
- ▶ Black Polymer Frame and Matte Stainless Steel Slide
- ▶ External Safety & Loaded Chamber Indicator (LCI)
- ▶ Ships with three magazines



P9 KP9093

**9 MM | 7+1 ROUND**

- ▶ Barrel: 3.5", Polygonal rifling; 1 - 10 RH twist
- ▶ Length O/A: 5.8"
- ▶ Height: 4.5"
- ▶ Slide Width: 0.9"
- ▶ Weight: Pistol 15 oz., Magazine 1.9 oz.
- ▶ Sights: Drift adjustable, White bar-dot combat sights
- ▶ Trigger Pull Weight: 7.0 lbs
- ▶ Black Polymer Frame and Matte Stainless Steel Slide
- ▶ Ships with three magazines



P40<sup>®</sup> KP4043

**.40 S&W | 6+1 ROUND**

- ▶ Barrel: 3.6", Polygonal rifling; 1 - 16 RH twist
- ▶ Length O/A: 6.1"
- ▶ Height: 4.6"
- ▶ Slide Width: 0.94"
- ▶ Weight: Pistol 16.8 oz., Magazine 1.9 oz.
- ▶ Sights: Drift adjustable, White bar-dot combat sights
- ▶ Trigger Pull Weight: 7.0 lbs
- ▶ Black Polymer Frame and Matte Stainless Steel Slide
- ▶ Ships with three magazines



P380<sup>®</sup> KP3833

**.380 ACP | 6+1 ROUND**

- ▶ Barrel: 2.53", Premium Lothar Walther Match Grade Barrel
- ▶ Length O/A: 4.9"
- ▶ Height: 3.9"
- ▶ Slide Width: 0.75"
- ▶ Weight: Pistol 9.9 oz., Magazine 1.3 oz.
- ▶ Sights: Drift adjustable, White bar-dot combat sights
- ▶ Trigger Pull Weight: 7.0 lbs
- ▶ Black Polymer Frame and Matte Stainless Steel Slide
- ▶ Ships with three magazines



The K Series steel 9mm was the first design rolled out of the factory in 1995, and the line of concealed carry handguns has continued to grow ever since. The P & K Series have proven themselves as being the best concealed carry/back-up gun on the market by offering high quality and total reliability in a compact thin package.

Other features include a Lothar Walther 3.5" polygonal rifled match grade barrel, smooth DAO trigger, stainless or blackened stainless slide and an option for night sights. This compact size Kahr, available in 9mm and .40 S&W, offers excellent balance in the hand.



**K40<sup>®</sup> ELITE** K4048

**.40 S&W | 6+1 ROUND**

- ▶ Barrel: 3.5", Polygonal rifling; 1 - 16 RH twist
- ▶ Length O/A: 6.1"
- ▶ Height: 4.5"
- ▶ Slide Width: 0.94"
- ▶ Weight: Pistol 24.1 oz., Magazine 1.9 oz.
- ▶ Sights: Drift adjustable, White bar-dot combat sights
- ▶ Trigger Pull Weight: 7.0 lbs
- ▶ Polished Stainless Steel Frame and Slide
- ▶ Ships with three magazines



**K9<sup>®</sup> ELITE** K9098

**9MM | 7+1 ROUND**

- ▶ Barrel: 3.5", Polygonal rifling; 1 - 10 RH twist
- ▶ Length O/A: 6.0"
- ▶ Height: 4.5"
- ▶ Slide Width: 0.9"
- ▶ Weight: Pistol 23.1 oz., Magazine 1.9 oz.
- ▶ Sights: Drift adjustable, White bar-dot combat sights
- ▶ Trigger Pull Weight: 7.0 lbs
- ▶ Polished Stainless Steel Frame and Slide
- ▶ Ships with three magazines



**K40<sup>®</sup>** K4043

**.40 S&W | 6+1 ROUND**

- ▶ Barrel: 3.5", Polygonal rifling; 1 - 16 RH twist
- ▶ Length O/A: 6.1"
- ▶ Height: 4.5"
- ▶ Slide Width: 0.94"
- ▶ Weight: Pistol 24.1 oz., Magazine 1.9 oz.
- ▶ Sights: Drift adjustable, White bar-dot combat sights
- ▶ Trigger Pull Weight: 7.0 lbs
- ▶ Matte Stainless Steel Frame and Slide
- ▶ Ships with three magazines



**K9<sup>®</sup>** K9093

**9MM | 7+1 ROUND**

- ▶ Barrel: 3.5", Polygonal rifling; 1 - 10 RH twist
- ▶ Length O/A: 6.0"
- ▶ Height: 4.5"
- ▶ Slide Width: 0.9"
- ▶ Weight: Pistol 23.1 oz., Magazine 1.9 oz.
- ▶ Sights: Drift adjustable, White bar-dot combat sights
- ▶ Trigger Pull Weight: 7.0 lbs
- ▶ Matte Stainless Steel Frame and Slide
- ▶ Ships with three magazines





PM45<sup>®</sup> PM4543

**.45 ACP | 5+1 ROUND**

- ▶ Barrel: 3.2", Polygonal rifling, 1 - 16.38 RH twist
- ▶ Length O/A: 5.7"
- ▶ Height: 4.5"
- ▶ Slide Width: 1.00"
- ▶ Weight: Pistol 17.3 oz., Magazine 2 oz.
- ▶ Sights: Drift adjustable, White bar-dot combat sights
- ▶ Trigger Pull Weight: 7.0 lbs
- ▶ Black Polymer Frame and Matte Stainless Steel Slide
- ▶ Ships with three magazines



## KAHR PREMIUM SERIES

- ▶ SHIPS IN LOCKABLE, HARD PLASTIC CASE
- ▶ NOW SHIPPING WITH THREE MAGAZINES



PM40<sup>®</sup> MA COMPLIANT PM4143

**.40 S&W | 5+1 ROUND**

- ▶ Barrel: 3.1", Polygonal rifling; 1 - 16 RH twist
- ▶ Length O/A: 5.4"
- ▶ Height: 4.0"
- ▶ Slide Width: 0.94"
- ▶ Weight: Pistol 15.8 oz., Magazine 1.9 oz
- ▶ Sights: Drift adjustable, White bar-dot combat sights
- ▶ Trigger Pull Weight: 6.0 lbs
- ▶ Black Polymer Frame and Matte Stainless Steel Slide
- ▶ External Safety & Loaded Chamber Indicator (LCI)
- ▶ Ships with three magazines



PM9<sup>®</sup> MA COMPLIANT PM9193

**9 MM | 6+1 ROUND**

- ▶ Barrel: 3.1", Polygonal rifling; 1 - 10 RH twist
- ▶ Length O/A: 5.3"
- ▶ Height: 4.0"
- ▶ Slide Width: 0.9"
- ▶ Weight: Pistol 14 oz., Magazine 1.9 oz.
- ▶ Sights: Drift adjustable, White bar-dot combat sights
- ▶ Trigger Pull Weight: 6.0 lbs
- ▶ Black Polymer Frame and Matte Stainless Steel Slide
- ▶ External Safety & Loaded Chamber Indicator (LCI)
- ▶ Ships with three magazines



PM40<sup>®</sup> PM4043

**.40 S&W | 5+1 ROUND**

- ▶ Barrel: 3.1", Polygonal rifling; 1 - 16 RH twist
- ▶ Length O/A: 5.4"
- ▶ Height: 4.0"
- ▶ Slide Width: 0.94"
- ▶ Weight: Pistol 15.8 oz., Magazine 1.9 oz
- ▶ Sights: Drift adjustable, White bar-dot combat sights
- ▶ Trigger Pull Weight: 7.0 lbs
- ▶ Black Polymer Frame and Matte Stainless Steel Slide
- ▶ Ships with three magazines



PM9<sup>®</sup> PM9093

**9 MM | 6+1 ROUND**

- ▶ Barrel: 3.1", Polygonal rifling; 1 - 10 RH twist
- ▶ Length O/A: 5.3"
- ▶ Height: 4.0"
- ▶ Slide Width: 0.9"
- ▶ Weight: Pistol 14 oz., Magazine 1.9 oz.
- ▶ Sights: Drift adjustable, White bar-dot combat sights
- ▶ Trigger Pull Weight: 7.0 lbs
- ▶ Black Polymer Frame and Matte Stainless Steel Slide
- ▶ Ships with three magazines





Kahr's PM & MK Series offer the highest quality thin profile subcompact, pocket carry handgun on the market today. Bigger is not always better especially when looking for a concealed carry handgun. Features include a Lothar Walther 3" polygonal rifled match grade barrel, smooth DAO trigger, stainless or blackened stainless slide and an option for night sights.

The PM & MK Series, available in 9mm, .40 S&W and .45 ACP (PM only) have made Kahr Arms a leader in the firearms market providing a high quality handgun that is light, thin, small and optimal for concealed carry.



**MK40<sup>®</sup> ELITE** M4048

**.40 S&W | 5+1 ROUND**

- ▶ Barrel: 3.0", Polygonal rifling; 1 - 16 RH twist
- ▶ Length O/A: 5.4"
- ▶ Height: 4.0"
- ▶ Slide Width: 0.94"
- ▶ Weight: Pistol 23.1 oz., Magazine 1.9 oz
- ▶ Sights: Drift adjustable, White bar-dot combat sights
- ▶ Trigger Pull Weight: 7.0 lbs
- ▶ Polished Stainless Steel Frame and Slide
- ▶ Ships with three magazines



**MK9<sup>®</sup> ELITE** M9098

**9MM | 6+1 ROUND**

- ▶ Barrel: 3.0", Polygonal rifling; 1 - 10 RH twist
- ▶ Length O/A: 5.3"
- ▶ Height: 4.0"
- ▶ Slide Width: 0.9"
- ▶ Weight: Pistol 22.1 oz., Magazine 1.9 oz
- ▶ Sights: Drift adjustable, white bar-dot combat sights
- ▶ Trigger Pull Weight: 7.0 lbs
- ▶ Polished Stainless Steel Frame and Slide
- ▶ Ships with three magazines



**MK40<sup>®</sup>** M4043

**.40 S&W | 5+1 ROUND**

- ▶ Barrel: 3.0", Polygonal rifling; 1 - 16 RH twist
- ▶ Length O/A: 5.4"
- ▶ Height: 4.0"
- ▶ Slide Width: 0.94"
- ▶ Weight: Pistol 23.1 oz., Magazine 1.9 oz
- ▶ Sights: Drift adjustable, White bar-dot combat sights
- ▶ Trigger Pull Weight: 7.0 lbs
- ▶ Matte Stainless Steel Frame and Slide
- ▶ Ships with three magazines



**MK9<sup>®</sup>** M9093

**9MM | 6+1 ROUND**

- ▶ Barrel: 3.0", Polygonal rifling; 1 - 10 RH twist
- ▶ Length O/A: 5.3"
- ▶ Height: 4.0"
- ▶ Slide Width: 0.9"
- ▶ Weight: Pistol 22.1 oz., Magazine 1.9 oz
- ▶ Sights: Drift adjustable, White bar-dot combat sights
- ▶ Trigger Pull Weight: 7.0 lbs
- ▶ Matte Stainless Steel Frame and Slide
- ▶ Ships with three magazines



U N R I V A L E D V A L U E



• Shown Black Carbon Fiber Pattern, Printed CW9093BCF  
Three Dot Sight System



**CT45<sup>®</sup>** CT4543

**.45 ACP | 7+1 ROUND**

- ▶ Barrel: 4.0", Conventional rifling; 1 - 16.38 RH twist
- ▶ Length O/A: 6.6"
- ▶ Height: 5.3"
- ▶ Slide Width: 1.00"
- ▶ Weight: Pistol 23.7 oz., Magazine 2.4 oz.
- ▶ Sights: Drift adjustable white bar-dot combat rear sight, Pinned in polymer front sight
- ▶ Trigger Pull Weight: 7.0 lbs
- ▶ Black Polymer Frame and Matte Stainless Steel Slide
- ▶ Ships with one magazine



**CT9<sup>®</sup>** CT9093

**9MM | 8+1 ROUND**

- ▶ Barrel: 4.0", Conventional rifling; 1 - 10 RH twist
- ▶ Length O/A: 6.5"
- ▶ Height: 5.08"
- ▶ Slide Width: 0.90"
- ▶ Weight: Pistol 18.5 oz., Magazine 2.1 oz.
- ▶ Sights: Drift adjustable white bar-dot combat rear sight, Pinned in polymer front sight
- ▶ Trigger Pull Weight: 7.0 lbs
- ▶ Black Polymer Frame and Matte Stainless Steel Slide
- ▶ Ships with one magazine



**CT40<sup>®</sup>** CT4043

**.40 S&W | 7+1 ROUND**

- ▶ Barrel: 4.0", Conventional rifling; 1 - 16 right-hand twist
- ▶ Length O/A: 6.5"
- ▶ Height: 5.1"
- ▶ Slide Width: 0.94"
- ▶ Weight: Pistol 21.8 oz., Magazine 2.1 oz.
- ▶ Sights: Drift adjustable white bar-dot combat rear sight, Pinned in polymer front sight
- ▶ Trigger Pull Weight: 7.0 lbs
- ▶ Black Polymer Frame and Matte Stainless Steel Slide
- ▶ Ships with one magazine



**CT380<sup>®</sup>** CT3833

**.380 ACP | 7+1 ROUND**

- ▶ Barrel: 3.0", Conventional Rifling, 1 - 16 RH twist
- ▶ Length O/A: 5.5"
- ▶ Height: 4.4"
- ▶ Slide Width: 0.75"
- ▶ Weight: Pistol 11.4 oz., Magazine 1.4 oz.
- ▶ Sights: Drift adjustable white bar-dot combat rear sight, Pinned in polymer front sight
- ▶ Trigger Pull Weight: 7.0 lbs
- ▶ Black Polymer Frame and Matte Stainless Steel Slide
- ▶ Ships with one magazine



Kahr offers their value-priced full frame firearm; the Kahr CT Series. The CT Series feature a full-size polymer frame with a matte stainless steel slide and a drift-adjustable white bar-dot sight configuration.

For decades, Kahr has offered gun enthusiasts the option of both compact and full-frame firearms. Their popular TP9, TP40 and TP45 have become legendary, but as the economy continues to take a hit, the demand for more affordable firearms has become a call to duty. Kahr took the best features of their TP Series and with ingenuity and their meticulous dedication to detail and quality, they developed the CT Series.

Like all Kahr pistols, the CT4543, CT4043, CT9093, and CT3833 feature Kahr's patents and industry-leading slim and clean single stack design for concealed carry and home defense.



**CW45<sup>®</sup>** CW4543

**.45 ACP | 6+1 ROUND**

- ▶ Barrel: 3.6", Conventional rifling, 1 - 16.38 RH twist
- ▶ Length O/A: 6.3"
- ▶ Height: 4.8"
- ▶ Slide Width: 1.0"
- ▶ Weight: Pistol 18.5 oz., Magazine 2 oz.
- ▶ Sights: Drift adjustable white bar-dot combat rear sight, Pinned in polymer front sight
- ▶ Trigger Pull Weight: 7.0 lbs
- ▶ Black Polymer Frame and Matte Stainless Steel Slide
- ▶ Ships with one magazine

**CW40<sup>®</sup>** CW4043

**.40 S&W | 6+1 ROUND**

- ▶ Barrel: 3.6", Conventional rifling; 1-16 RH twist
- ▶ Length O/A: 6.4"
- ▶ Height: 4.6"
- ▶ Slide Width: 0.94"
- ▶ Weight: Pistol 16.8 oz., Magazine 1.9 oz.
- ▶ Sights: Drift adjustable white bar-dot combat rear sight, Pinned in polymer front sight
- ▶ Trigger Pull Weight: 7.0 lbs
- ▶ Black Polymer Frame and Matte Stainless Steel Slide
- ▶ Ships with one magazine



**CW9<sup>®</sup>** CW9093

**9 MM | 7+1 ROUND**

- ▶ Barrel: 3.5", Conventional rifling; 1-10 RH twist
- ▶ Length O/A: 5.9"
- ▶ Height: 4.5"
- ▶ Slide Width: 0.9"
- ▶ Weight: Pistol 15.8 oz., Magazine 1.9 oz.
- ▶ Sights: Drift adjustable white bar-dot combat rear sight, Pinned in polymer front sight
- ▶ Trigger Pull Weight: 7.0 lbs
- ▶ Black Polymer Frame and Matte Stainless Steel Slide
- ▶ Ships with one magazine

**CW9<sup>®</sup>** CW9093BCF

**9 MM | 7+1 ROUND** **NEW**

- ▶ Barrel: 3.5", Conventional rifling; 1-10 RH twist
- ▶ Length O/A: 5.9"
- ▶ Height: 4.5"
- ▶ Slide Width: 0.9"
- ▶ Weight: Pistol 15.8 oz., Magazine 1.9 oz.
- ▶ Sights: Three dot sight system drift adjustable white dot rear sight, pinned in polymer white dot front sight
- ▶ Trigger Pull Weight: 7.0 lbs
- ▶ Black Carbon Fiber Pattern, Printed Polymer Frame and Matte Stainless Steel Slide
- ▶ Ships with one magazine



**CW380<sup>®</sup>** CW3833

**.380 ACP | 6+1 ROUND**

- ▶ Barrel: 2.58", Conventional Rifling, 1 - 16 RH twist
- ▶ Length O/A: 5.0"
- ▶ Height: 3.9"
- ▶ Slide Width: 0.75"
- ▶ Weight: Pistol 10.2 oz., Magazine 1.3 oz.
- ▶ Sights: Drift adjustable white bar-dot combat rear sight, Pinned in polymer front sight
- ▶ Trigger Pull Weight: 7.0 lbs
- ▶ Black Polymer Frame and Matte Stainless Steel Slide
- ▶ Ships with one magazine

The Kahr CW Series has the combination of features that makes it the best Concealed Carry Pistol in the market. It has the ideal combination of stopping power and shooting comfort, and is smaller, thinner and lighter than competitive brands. The CW Series natural point of aim and low-felt recoil make them the ideal guns to shoot and carry.

With the introduction of innovative manufacturing processes in the production of the CW Series, the Kahr pistol represents an unrivaled value.





**CM45®** CM4543

**.45 ACP | 5+1 ROUND**

- ▶ Barrel: 3.34", Conventional rifling; 1 - 16.38 RH twist
- ▶ Length O/A: 5.8"
- ▶ Height: 4.5"
- ▶ Slide Width: 1.00"
- ▶ Weight: Pistol 17.3 oz., Magazine 2 oz.
- ▶ Sights: Drift adjustable white bar-dot combat rear sight, Pinned in polymer front sight
- ▶ Trigger Pull Weight: 7.0 lbs
- ▶ Black Polymer Frame and Matte Stainless Steel Slide
- ▶ Ships with one magazine



**CM40®** CM4043

**.40 S&W | 5+1 ROUND**

- ▶ Barrel: 3.1", Conventional rifling; 1 - 16 RH twist
- ▶ Length O/A: 5.5"
- ▶ Height: 4.0"
- ▶ Slide Width: 0.94"
- ▶ Weight: Pistol 15.8 oz., Magazine 1.9 oz.
- ▶ Sights: Drift adjustable white bar-dot combat rear sight, Pinned in polymer front sight
- ▶ Trigger Pull Weight: 7.0 lbs
- ▶ Black Polymer Frame and Matte Stainless Steel Slide
- ▶ Ships with one magazine



**CM9®** CM9093

**9 MM | 6+1 ROUND**

- ▶ Barrel: 3.0", Conventional rifling; 1 - 10 RH twist
- ▶ Length O/A: 5.4"
- ▶ Height: 4.0"
- ▶ Slide Width: 0.9"
- ▶ Weight: Pistol 14 oz., Magazine 1.9 oz.
- ▶ Sights: Drift adjustable white bar-dot combat rear sight, Pinned in polymer front sight
- ▶ Trigger Pull Weight: 7.0 lbs
- ▶ Black Polymer Frame and Matte Stainless Steel Slide
- ▶ Ships with one magazine

The CM Series, which debuted in spring 2011 with the CM9, takes the value priced features from Kahr's CW series (3.6" barrel, 9 mm, .40 S&W and .45 ACP models) and incorporates these features into a smaller 3" barrel package. The CM Series have the same external dimensions as the PM Series, which make it ideal for concealed carry by licensed civilians and law enforcement personnel.

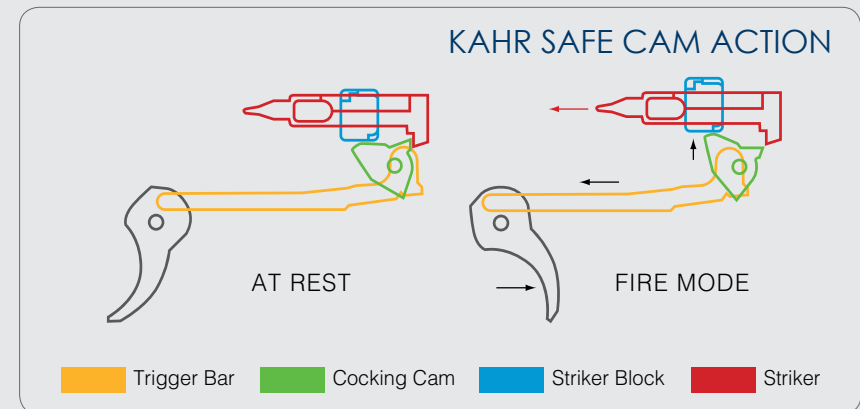
The CM series slide is only .90 - 1.00 inch wide and machined from solid 416 stainless slide with a matte finish, each gun is shipped with one stainless steel magazine with a flush baseplate. Magazines are USA made, plasma welded, tumbled to remove burrs and feature Wolff Gunsprings.

The magazine catch in the polymer frame is all metal and will not wear out on the stainless steel magazine after extended use.

Kahr offers the CM series at a great value price but does not compromise on the features, accuracy or reliability found in all Kahr pistols.

**UNIQUE DESIGN OF KAHR**

The incomparable cocking cam trigger system employs a cam to both unlock the passive safety and complete cocking and releasing of the firing pin. The system provides a "safe cam action" and unbelievably smooth double action only trigger stroke, fast to fire in critical defensive situations. These innovations, found only in the Kahr pistol, give the Kahr shooter an advantage in self defense, home protection and duty or off duty use.





GOLD CERAKOTE LIMITED EDITION



CT380<sup>®</sup> CT3833CG

**.380** ACP | **7+1** ROUND | NEW

- ▶ Barrel: 3.0", Conventional Rifling, 1 - 16 RH twist
- ▶ Length O/A: 5.5"
- ▶ Height: 4.4"
- ▶ Slide Width: 0.75"
- ▶ Weight: 11.4 oz., Magazine 1.4 oz.
- ▶ Sights: Drift adjustable white bar-dot combat rear sight, Pinned in polymer front sight
- ▶ Trigger Pull Weight: 7.0 lbs
- ▶ Black Polymer Frame and Gold Cerakote Coated Stainless Steel Slide
- ▶ Ships with two magazines



CW380<sup>®</sup> CW3833CG

**.380** ACP | **6+1** ROUND | NEW

- ▶ Barrel: 2.58", Conventional Rifling, 1 - 16 RH twist
- ▶ Length O/A: 5.0"
- ▶ Height: 3.9"
- ▶ Slide Width: 0.75"
- ▶ Weight: Pistol 10.2 oz., Magazine 1.3 oz.
- ▶ Sights: Drift adjustable white bar-dot combat rear sight, Pinned in polymer front sight
- ▶ Trigger Pull Weight: 7.0 lbs
- ▶ Black Polymer Frame and Gold Cerakote Coated Stainless Steel Slide
- ▶ Ships with two magazines

WWW.THESHOOTINGWAREHOUSE.COM  
EXCLUSIVE

WWW.GALLERYOFGUNS.COM  
EXCLUSIVE



USC EXCLUSIVE

**CW45<sup>®</sup>** CW4543BB

**.45 ACP | 6+1 ROUND**

- ▶ Barrel: 3.6", Conventional rifling, 1 - 16.38 RH twist
- ▶ Length O/A: 6.3"
- ▶ Height: 4.8"
- ▶ Slide Width: 1.00"
- ▶ Weight: Pistol 18.5 oz., Magazine 2 oz.
- ▶ Sights: Drift adjustable white bar-dot combat rear sight, Pinned in polymer front sight
- ▶ Trigger Pull Weight: 7.0 lbs
- ▶ Black Polymer Frame and Cerakote Burnt Bronze Stainless Steel Slide
- ▶ Ships with one magazine



USC EXCLUSIVE

**CW9<sup>®</sup>** CW9093BB

**9 MM | 7+1 ROUND**

- ▶ Barrel: 3.5", Conventional rifling; 1-10 RH twist
- ▶ Length O/A: 5.9"
- ▶ Height: 4.5"
- ▶ Slide Width: 0.9"
- ▶ Weight: Pistol 15.8 oz., Magazine 1.9 oz.
- ▶ Sights: Drift adjustable white bar-dot combat rear sight, Pinned in polymer front sight
- ▶ Trigger Pull Weight: 7.0 lbs
- ▶ Black Polymer Frame and Cerakote Burnt Bronze Stainless Steel Slide
- ▶ Ships with one magazine



USC EXCLUSIVE

**CW40<sup>®</sup>** CW4043BB

**.40 S&W | 6+1 ROUND**

- ▶ Barrel: 3.6", Conventional rifling; 1-16 RH twist
- ▶ Length O/A: 6.3"
- ▶ Height: 4.6"
- ▶ Slide Width: 0.94"
- ▶ Weight: Pistol 16.8 oz., Magazine 1.9 oz.
- ▶ Sights: Drift adjustable white bar-dot combat rear sight, Pinned in polymer front sight
- ▶ Trigger Pull Weight: 7.0 lbs
- ▶ Black Polymer Frame and Cerakote Burnt Bronze Stainless Steel Slide
- ▶ Ships with one magazine



• Shown Cerakote Burnt Bronze CW9093BB



USC EXCLUSIVE

**CW380<sup>®</sup>** CW3833BB

**.380 ACP | 6+1 ROUND**

- ▶ Barrel: 2.58", Conventional Rifling, 1 - 16 RH twist
- ▶ Length O/A: 5.0"
- ▶ Height: 3.9"
- ▶ Slide Width: 0.75"
- ▶ Weight: Pistol 10.2 oz., Magazine 1.3 oz.
- ▶ Sights: Drift adjustable white bar-dot combat rear sight, Pinned in polymer front sight
- ▶ Trigger Pull Weight: 7.0 lbs
- ▶ Black Polymer Frame and Cerakote Burnt Bronze Stainless Steel Slide
- ▶ Ships with one magazine



CM45<sup>®</sup> CM9<sup>®</sup>  
CERAKOTE ARMOR BLACK  
LIMITED EDITION



CM45<sup>®</sup> CM4543CB

**.45 ACP** | **5+1** ROUND **NEW**

- ▶ Barrel: 3.34", Conventional Rifling, 1 - 16 RH twist
- ▶ Length O/A: 5.8"
- ▶ Height: 4.5"
- ▶ Slide Width: 1.00"
- ▶ Weight: Pistol 17.3 oz., Magazine 2 oz.
- ▶ Sights: Drift adjustable white bar-dot combat rear sight, Pinned in polymer front sight
- ▶ Trigger Pull Weight: 7.0 lbs
- ▶ Black Polymer Frame and Armor Black Cerakote Coated Stainless Steel Slide
- ▶ Ships with one magazine

MGE WHOLESALE EXCLUSIVE



CM9<sup>®</sup> CM9093CB

**.9 MM** | **6+1** ROUND **NEW**

- ▶ Barrel: 3.0", Conventional Rifling, 1 - 16 RH twist
- ▶ Length O/A: 5.4"
- ▶ Height: 4.0"
- ▶ Slide Width: 0.9"
- ▶ Weight: Pistol 14 oz., Magazine 1.9 oz.
- ▶ Sights: Drift adjustable white bar-dot combat rear sight, Pinned in polymer front sight
- ▶ Trigger Pull Weight: 7.0 lbs
- ▶ Black Polymer Frame and Armor Black Cerakote Coated Stainless Steel Slide
- ▶ Ships with one magazine

MGE WHOLESALE EXCLUSIVE



## THOMPSON SUBMACHINE GUN

General John T. Thompson, a graduate of West Point, began his research in 1915 for an automatic weapon to supply the American military. World War I was dragging on and casualties were mounting. Having served in the U.S. Army's ordnance supplies and logistics, General Thompson understood that greater firepower was needed to end the war.

Thompson was driven to create a lightweight, fully automatic firearm that would be effective against the contemporary machine gun. His idea was "a one-man, hand-held machine gun. A trench broom!" The first shipment of Thompson prototypes arrived on the dock in New York for shipment to Europe on November 11, 1918 the day that the War ended.

In 1919, Thompson directed Auto-Ordnance to modify the gun for nonmilitary use. The gun, classified a "submachine gun" to denote a small, hand-held, fully automatic firearm chambered for pistol ammunition, was officially named the "Thompson submachine gun" to honor the man most responsible for its creation.

With military and police sales low, Auto-Ordnance sold its submachine guns through every legal outlet it could. A Thompson submachine gun could be purchased either by mail order, or from the local hardware or sporting goods store.

## DILLINGER'S CHOICE

While Auto-Ordnance was selling the Thompson submachine gun in the open market in the '20s, Gen. Thompson was uncomfortably aware of what the guns could do if in the wrong hands. To his distress, the submachine gun turned out to be the weapon chosen by gangsters.

The "Tommy Gun", literally, made the '20s roar. Possessing tremendous firepower, the Thompson submachine gun was an effective weapon. The Thompson was used by gangsters, such as John Dillinger, Al Capone and Baby Face Nelson.



## TRUSTED COMPANION FOR TROOPS

It was, also, in the mid '20s that the Thompson submachine gun was adopted for service by an official military branch of the government.

The U.S. Coast Guard issued Thompsons to patrol boats along the eastern seaboard. In 1928, Auto-Ordnance made a new Navy model to be used by Marines on Naval gunboats.

World War II began, and the Army recognized the need for the submachine gun. The Thompson, simplified and more durable with the compensator and cooling fins removed and a 30 round stick magazine, became the constant companion of American soldiers. Story, after story, tells how it was the fire of the Thompson submachine gun that protected the villages, saved the troops and won the battles in Europe and the Pacific.

## HISTORICAL RESEARCH

Kahr Firearms Group is proud to preserve the legacy of Auto-Ordnance Corporation, the original maker of the famous Thompson submachine gun. To assure the historical accuracy of the Auto-Ordnance design, Kahr researched the original engineering drawings. Hundreds of U.S. military microfiche and hand drawings of the Thompson models dating back to 1919 were examined.

## Thompson Submachine Gun - A Piece of American History

The Thompson submachine gun is a historical firearm. Each one is the union of original design, quality materials and fine workmanship. An American legacy preserved. Carried by the gangsters in the '20s. Trusted by the troops during World War II. Find out how it feels to hold a Thompson submachine gun!

Put a Piece of American History in Your Hands.

MADE WITH PRIDE IN THE U.S.A.



## Thompson® 1927A-1

**.45 ACP** | MODEL: **T1B**

- ▶ Detachable buttstock
- ▶ Accepts both stick and drum magazines



## Thompson® 1927A-1

**.45 ACP** | MODEL: **T1-14**

**NEW**

**.45 ACP** | MODEL: **T1B-14**

**NEW**

- ▶ Detachable buttstock (T1B-14)
- ▶ Accepts both stick and drum magazines



• Shown T1-14

	1927A-1 WITH DETACHABLE BUTTSTOCK	1927A-1 WITH 14" BARREL / WITH DETACHABLE BUTTSTOCK
Model	T1B / T1B100D / T1B50D	T1-14 / T1B-14
Caliber	.45 ACP	.45 ACP
Barrel	16.5", Finned (w/ compensator 18") / 1 in 16 right hand twist	14.5", Finned (w/ compensator 16.5") / 1 in 16 right hand twist
Material	Steel	Steel
Length	41" overall / 31.5" (without buttstock)	39" overall / 29.5" (without buttstock)
Weight	13 lbs.	12.5 lbs.
Sights	Pinned in front blade, open rear adjustable	Pinned in front blade, open rear adjustable
Stock	Walnut detachable buttstock and vertical foregrip	Walnut detachable buttstock and vertical foregrip
Magazines	20 round stick magazine (T1B) / 100 round drum & 20 round stick magazines (T1B100D) / 50 round drum & 20 round stick magazines (T1B50D)	20 round stick magazine
Operation	Blow back, fires from a closed bolt	Blow back, fires from a closed bolt
Warranty	1 year	1 year

COLLECTIBLE • LEGAL TO OWN • SHIPPED WITH (1) 20 ROUND NEW MAGAZINE OR SHIPPED WITH (1) 30 ROUND SURPLUS MAGAZINE FOR MA  
Tommy Guns are prohibited in CT, NY. Please check with your local law enforcement agencies.



### Thompson® 1927A-1 GOLD PLATED

**.45 ACP**

 MODEL: **T150DTG**
**NEW**

- ▶ Accepts both stick and drum magazines
- ▶ Ships with 50 round drum and 20 round stick magazines



### Thompson® 1927A-1 HARD CHROME

**.45 ACP**

 MODEL: **T150DCR**
**NEW**

- ▶ Accepts both stick and drum magazines
- ▶ Ships with 50 round drum and 20 round stick magazines

Auto-Ordnance is proud to introduce an exciting and classy look to their century-old Thompson, historically referred to as the "Chicago Typewriter®". The Thompson 1927A-1 semi-automatic carbine is now offered in a Gold plated finish and also a Polished Chrome.

Either of these time-honored reproduction semi-auto carbines will undoubtedly impress your friends when you take it out to the shooting range. These guns are offered in .45 ACP and have a 16.5" finned barrel (18" with compensator), with a 1 in 16 right-hand twist. The frame is constructed in steel with either a Gold plated finish or a Polished Chrome finish. The gun weighs 13 lbs. and has an overall length of 41". Other features include a pinned in front blade and an open rear adjustable sight. The stock is fixed and is made from luxurious American Walnut and has a vertical foregrip. These two new models each ship with one 50-round drum and one 20-round stick magazine. The magazines too are plated in either polished gold or chrome.



• Shown T150D

## Thompson® 1927A-1

**.45 ACP** | MODELS: **T1** / **T1100D** / **T150D**

**.45 ACP** | MODELS: **T1-SMAG** / **T5-SMAG**

**.45 ACP** | MODELS: **T5** / **T5100D** (Lightweight)

**.45 ACP** | MODEL: **T1D**

All the classic details of the time honored original are reproduced in today's semi-auto Thompson. The frame and receiver are machined from solid steel or aluminum. The wood is genuine American walnut. This .45 caliber carbine features a 16 1/2" finned barrel, compensator and is available with a blued steel receiver or a lighter weight aluminum receiver. This configuration is our most popular model.

	1927A-1
Model	T1 / T1100D / T150D / T1D (with 10 round drum for NJ & MD) / T5 (Lightweight) / T5100D (Lightweight) / T1-SMAG / T5-SMAG (30 round surplus magazine allowed in MA)
Caliber	.45 ACP
Barrel	16.5", Finned (w/ compensator 18") / 1 in 16 right hand twist
Material	Steel (T1) / Aluminum alloy (T5)
Length	41" overall
Weight	13 lbs. (T1) / 9.5 lbs. (T5)
Sights	Pinned in front blade, Open rear adjustable
Stock	Walnut fixed stock and vertical foregrip
Magazines	20 round stick magazine (T1) / 100 round drum & 20 round stick magazines (T1100D) / 50 round drum & 20 round stick magazines (T150D) / 10 round drum magazine (T1D) / 20 round stick magazine (T5) / 100 round drum & 20 round stick magazines (T5100D)
Operation	Blow back, fires from a closed bolt
Warranty	1 year





## Thompson® 1927A-1 "COMMANDO"

**.45 ACP** | MODEL: **T1-C**

- ▶ The semi-auto "Commando", features parkerized steel and all wood stock, rear grip and horizontal forend in a durable black finish. With the same hard hitting .45 caliber, features and quality of our 1927 A1 deluxe model, it comes complete with a 20 round magazine and black nylon sling.
- ▶ Accepts both stick and drum magazines



## Thompson® M1 M1-C (Lightweight)

**.45 ACP** | MODELS: **TM1 / TM1C**

**.45 ACP** | MODEL: **TM1-SMAG**

- ▶ MODEL: TM1-SMAG (30 round surplus magazine allowed in MA)
- ▶ Will not accept drum magazines
- ▶ Available in both steel and aluminum receiver

Here is a .45 caliber semi-automatic version of the world's most famous military submachine gun. The Thompson M1 was used victoriously in battles throughout the world, inscribing its place for all times as a legend among military firearms. We offer the same attention to craftsmanship today that made the original so highly regarded. The look and feel are authentic, right down to the side bolt action. The frame and receiver are milled from solid steel or aluminum, the wood is genuine American walnut and the overall finish is a blued steel or black anodized aluminum.

	1927A-1 "COMMANDO"	M1 / M1-C
Model	T1-C	TM1 / TM1C
Caliber	.45 ACP	.45 ACP
Barrel	16.5", Finned (w/ compensator 18") / 1 in 16 right hand twist	16.5", Smooth / 1 in 16 right hand twist
Material	Steel	Steel (TM1) / Aluminum alloy (TM1C)
Length	41" overall	38" overall
Weight	13 lbs.	11.5 lbs. (TM1) / 9 lbs. (TM1C)
Sights	Pinned in front blade, Open rear adjustable	Pinned in front blade, Fixed battle rear
Stock	Black finish stock and horizontal foregrip	Walnut fixed stock and horizontal foregrip
Magazine	20 round stick magazine	30 round stick magazine
Operation	Blow back, fires from a closed bolt	Blow back, Fires from a closed bolt
Warranty	1 year	1 year

COLLECTIBLE • LEGAL TO OWN • SHIPPED WITH (1) 30 ROUND NEW MAGAZINE OR SHIPPED WITH (1) 30 ROUND SURPLUS MAGAZINE FOR MA  
Tommy Guns are prohibited in CT, NY. Please check with your local law enforcement agencies.

The Thompson .45 ACP models produced by Auto-Ordnance and Kahr Arms in Worcester, MA are faithful semi-auto firing replicas of the famous “Chicago Typewriter®.”



## Thompson® M1 SBR

**.45 ACP** | MODEL: **M1SB**

- ▶ Will not accept drum magazines
- ▶ Available in steel only
- ▶ This is a stunning reproduction of the Thompson military model made famous during WWII. The operation is semi-auto, fires from a closed bolt and has a 10.5" long barrel. The frame and receiver are machined from solid steel and the stock is genuine American walnut. The finish is blued steel.
- ▶ Thompson Short Barrel Rifles must be shipped to a Class 2 manufacturer or Class 3 dealer directly from our factory in Worcester, MA.
- ▶ The transfer paperwork between Kahr Arms /Auto-Ordnance and the dealer, known as a Form 3, must be completed and approved by the NFA branch, Bureau of Alcohol, Tobacco and Firearms (BATF) before the Thompson SBR can be shipped to the dealer. The customer needs to pay a \$200 transfer fee directly to the BATF. Your local dealer can assist you in this process.

	M1 SBR
Model	M1SB
Caliber	.45 ACP
Barrel	10.5", Smooth, 1 in 16 right hand twist
Material	Steel
Length	32" overall
Weight	10.5 lbs.
Sights	Blade front, Fixed battle rear
Stock	Walnut fixed stock and horizontal foregrip
Magazine	30 round stick magazine
Operation	Blow back, Fires from a closed bolt
Warranty	1 year

COLLECTIBLE • LEGAL TO OWN SHIPPED WITH (1) 30 ROUND NEW MAGAZINE

Short Barrel Rifles (SBRs) are prohibited in HI, IL, NJ, NY, RI, WA. However, local laws may also prohibit SBRs. Please check with your local law enforcement agencies.

## Thompson® 1927A-1 SBR

**.45 ACP** | MODEL: **T1SB**

- ▶ Shown with optional 50 round drum magazine
- ▶ Accepts both stick and drum magazines
- ▶ Available in steel only



This is the original Thompson design made famous during the 1920's in the hands of gangsters and G-men. The operation is semi-auto, fires from a closed bolt and the barrel is 10.5" long. The frame and receiver are machined from solid steel and the stock is genuine American walnut. The finish is blued steel.

## Thompson® 1927A-1 SBR

**.45 ACP** | MODEL: **T1BSB**

- ▶ Detachable buttstock
- ▶ Accepts both stick and drum magazines
- ▶ Available in steel only



	1927A-1 SBR	1927A-1 SBR W/ DETACHABLE BUTTSTOCK
Model	T1SB	T1BSB
Caliber	.45 ACP	.45 ACP
Barrel	10.5", Finned (w/ compensator 12") / 1 in 16 right hand twist	10.5", Finned (w/ compensator 12") / 1 in 16 right hand twist
Material	Steel	Steel
Length	35" overall	35" overall / 25.5" (without buttstock)
Weight	12 lbs.	12 lbs.
Sights	Blade front, open rear adjustable	Blade front, Open rear adjustable
Stock	Walnut fixed stock and vertical foregrip	Walnut detachable buttstock and vertical foregrip
Magazine	20 round stick magazine	20 round stick magazine
Operation	Blow back, fires from a closed bolt	Blow back, Fires from a closed bolt
Warranty	1 year	1 year

COLLECTIBLE • LEGAL TO OWN SHIPPED WITH (1) 20 ROUND NEW MAGAZINE

Short Barrel Rifles (SBRs) are prohibited in HI, IL, NJ, NY, RI, WA. However, local laws may also prohibit SBRs. Please check with your local law enforcement agencies.



• Shown TA5

## Thompson® PISTOL

**.45** ACP | MODEL: **TA5** | with 50 round drum magazine

**.45** ACP | MODEL: **TA5100D** | with 100 round drum magazine

**.45** ACP | MODEL: **TA510D** | with 10 round drum magazine

- ▶ 10.5" Barrel
- ▶ Aluminum Construction
- ▶ Accepts both stick and drum magazines

## The Thompson® 1927A-1 Deluxe Pistol TA5

10.5" Barrel, Lightweight, .45 ACP with 50 round drum. The Thompson Deluxe Pistol TA5 has a 10.5" barrel length and a walnut, horizontal foregrip. Included with the Thompson TA5 is one of the most famous accessories, the Drum magazine. The authentic Drum is entirely U.S. manufactured to the specifications that are as close as possible to the original.

Since 1999, Kahr Arms has been proud to support the legacy of the Auto-Ordnance Corporation, the original maker of the famous Thompson submachine gun. To ensure the historical accuracy of the Auto-Ordnance design, Kahr researched the original engineering drawings. Hundreds of U.S. military microfiche and hand drawings of the Thompson models dating back to 1919 were examined.

The Thompson submachine gun is a historical firearm. Each model is the union of original design, quality materials and fine workmanship. An American Legacy preserved. Thompson was carried by the gangsters in the 20's and trusted by the troops in WWII. The Thompson Deluxe Pistol TA5 is now available. Find out how it feels to carry a piece of history before legislation and politics put this design back on the shelf.

### THOMPSON PISTOL

THOMPSON PISTOL	
Model	TA5 / TA5100D / TA510D
Caliber	.45 ACP
Barrel	10.5", 1-16 right hand twist
Material	Aluminum frame and receiver
Length	23.3" overall
Weight	5 lbs. 14.5 oz.
Sights	Pinned in front blade, Fixed battle rear
Stock	Walnut, Horizontal foregrip
Magazine	50 round drum (TA5) / 100 round drum (TA5100D) / 10 round drum (TA510D)
Operation	Blow back, Fires from a closed bolt
Warranty	1 year

Legal in MA, NJ, MD with 10 round drum magazine, Model TA510D Not legal in NY.  
Please check with your local law enforcement agencies.





## Thompson® CUSTOM 1911 STAINLESS

**.45 ACP** | MODEL: 1911TC

- ▶ Barrel: 5"
- ▶ Length: 8.5" overall
- ▶ Weight: 39 oz.
- ▶ Sights: Front and rear dovetail cut / low-profile iron sights
- ▶ Grips: Checkered laminate grips with medallion
- ▶ Magazine: 7 round, Stainless
- ▶ Construction: Stainless Steel Frame and Slide
- ▶ Safeties: Thumb safety, grip safety and firing pin block
- ▶ Warranty: 1 year
- ▶ Ships with (1) 7 round magazine

The Thompson Custom 1911 frames are machined on high precision computerized machinery from a stainless steel casting. The slide is machined from a solid stainless steel billet utilizing specialized tooling to reduce set-up and refixturing.

The combination of high precision equipment and fewer set-ups result in a higher quality and more consistent final product at a lower price.

The slide and frame are finished in an attractive matte finish. The markings are laser-engraved including the distinctive Thompson bullet logo on the slide. Front and rear sights are black with serrations and are dovetailed into the slide. The ejection port is flared and the slide has front and rear serrations machined at a slight angle. The mainspring housing is checkered and the frontstrap is machine checkered at 20 lines per inch. Additional features include an adjustable trigger, combat hammer, stainless steel full-length recoil guide rod, extended beavertail grip safety, extended magazine release, checkered laminate grips with a Thompson bullet logo inlay and a serrated slide stop lever.

# 100th ANNIVERSARY MATCHED SET EDITION 1916 - 2016 LIMITED EDITION

Auto-Ordnance is proud to honor John T. Thompson and the legacy of the Tommy Gun with the introduction of the commemorative 100th Anniversary matched set edition of the Thompson 1927A-1 rifle and matching 1911A1 pistol.

 **TOMMY GUN**



## Thompson® 1927A-1 & MATCHING 1911A1 PISTOL

**.45 ACP** | MODEL: **T1ANN & 1911BKOANN** **NEW**

- ▶ Barrel: 16.5", finned (with compensator 18")
  - ▶ Length: 41" overall
  - ▶ Weight: 13 lbs.
  - ▶ Sights: Blade front, open rear adjustable
  - ▶ Grips: Walnut fixed stock and vertical foregrip
  - ▶ Magazine: 20 round stick magazine
  - ▶ Construction: Steel
  - ▶ Warranty: 1 year
  - ▶ Shipped in polymer hard case
- ▶ Barrel: 5"
  - ▶ Length: 8.5" overall
  - ▶ Weight: 39 oz.
  - ▶ Sights: Blade front, rear drift adjustable for windage
  - ▶ Grips: Brown checkered plastic
  - ▶ Magazine: 7 round
  - ▶ Construction: Steel, Black
  - ▶ Warranty: 1 year
  - ▶ Shipped in polymer hard case

## “VALUE MODEL”

**.45 ACP** | MODEL: **1911BKO**

The Auto-Ordnance 1911BKO frame incorporates GI specs and features a matte black finish frame, barrel and slide. The carbon steel slide, sear and disconnector are machined from solid bar stock and heat treated properly to assure durability and long life over many thousands of rounds. The low-profile sights feature a blade front sight and a rear drift adjustable for windage. The grip is brown checkered plastic.

This .45 ACP has a 5" barrel, length is 8.5" overall and weighs just 39 oz. The 1911BKO is 100% made in the USA and ships with one 7-round magazine. The BKO has a thumb safety, grip safety and firing pin block.



“VALUE MODEL”	
Model	1911BKO
Caliber	.45 ACP
Barrel	5"
Length	8.5" overall
Weight	39 oz.
Sights	Blade front, Rear drift adjustable for windage
Grips	Brown checkered plastic
Magazine	7 round
Construction	4140 steel frame casting and 4140 solid steel slide
Safeties	Thumb safety, grip safety, firing pin block
Warranty	1 year

5" ONE-PIECE BARREL • BLACK FINISH FRAME & SLIDE • SHIPS WITH (1) 7 ROUND MAGAZINE

OWN A PIECE OF AMERICAN HISTORY!

### M1 .30 CALIBER CARBINES

**.30** CALIBER | MODEL: **AOM130**

- ▶ Walnut stock and handguard
- ▶ Ships with 15 round magazine
- ▶ Warranty: 1 year



### M1 .30 CALIBER CARBINES CA & NY APPROVED

**.30** CALIBER | MODEL: **AOM140**

- ▶ Walnut stock and handguard
- ▶ Ships with 10 round magazine for CA & NY sales
- ▶ Warranty: 1 year



### "PARATROOPER FOLDING STOCK"

**.30** CALIBER | MODEL: **AOM150**

- ▶ Walnut folding stock and wood handguard
- ▶ Ships with 15 round magazine
- ▶ Warranty: 1 year





## AUTO-ORDNANCE M1 .30 CALIBER CARBINES

The Auto-Ordnance M1 .30 Caliber carbine is produced in Kahr's state-of-the-art manufacturing plant in Worcester, MA. The Auto-Ordnance carbines are produced using newly manufactured parts on high precision computerized machinery.

Markings include the following: Auto-Ordnance, Worcester, MA behind the rear sight; U.S. Carbine, Cal. 30 ML on the receiver in front of the bolt and the serial number is engraved on the left side of the receiver.

	.30 CALIBER CARBINES	PARATROOPER FOLDING STOCK
Model	AOM130 / AOM140	AOM150
Caliber	.30 Caliber	.30 Caliber
Barrel	18"	18"
Material	Steel	Steel
Length	35.75" overall	35.75" overall, 25.75" (folded)
Weight	5.4 lbs	5 lbs. 6 oz.
Sights	Blade front sight, Flip style rear sight	Blade front sight, Flip style rear sight
Stock	Walnut	Walnut
Magazines	One 15 round (AOM130), One 10 round (AOM140)	One 15 round
Construction	Wood stock and handguard	Walnut folding stock, Wood handguard
Finish	Black oxide	Black oxide



{ THE MOST POWERFUL  
SEMI-AUTOMATIC HANDGUN  
IN THE WORLD }

## HISTORY of MAGNUM RESEARCH

Since the Kahr Firearms Group purchased Magnum Research, Inc.® (MRI) in 2010 we have been successful beyond our highest expectations. We owe our success and profitable operations to our loyal customers and suppliers, our dedicated employees and stable management team. Magnum Research Inc. (MRI) opened up a new chapter in its almost 30 year old history when the Minneapolis, MN based company was purchased by Kahr Arms® in June 2010. Kahr Arms, based in Worcester, MA with offices and factories in Massachusetts, Pennsylvania and California is a well known producer of high quality compact handguns and maker of the world famous Thompson submachine guns commonly known as the “Tommy Gun®”. Magnum Research’s founders, Jim Skildum and John Risdall had been involved with the company since 1979. Both men oversaw the ascent of the Desert Eagle® Pistol from a concept on paper to a pop culture icon including a Playboy magazine front cover featuring Pamela Anderson showing off a Pink Desert Eagle pistol.

Over the past 30 years MRI has been responsible for the design and development of the Desert Eagle pistol. The design was refined and the actual pistols were manufactured by Israel Military Industries until 1995, when MRI shifted the manufacturing contract to Saco Defense in Saco, Maine. In 1998, MRI moved manufacturing back to IMI, which later reorganized under the name Israel Weapon Industries. Both Saco and IMI/IWI were strictly contractors: all of the intellectual property, including patents, copyrights and trademarks are the property of Magnum Research. Since 2009 the Desert Eagle Pistol has been produced in the USA at MRI’s Pillager, MN facility. Besides offering the basic black finish, MRI has developed a line-up of the Desert Eagle pistols in a number of

distinctive and appealing finishes including classic brushed chrome, “Tiger Stripe” pattern in a titanium nitride coated finish and a variety of modern cerakote finishes.

Magnum Research resumed importing the Baby Desert II pistols in 2011 from IWI in Israel after a three year hiatus. Starting in 2015 Magnum Research stopped working with IWI on the Baby Desert Eagle and contracted with BUL Ltd in Israel to produce an upgraded version of the Baby Desert Eagle called the Baby Desert Eagle III. MRI offers a high quality line of 1911 pistols from BUL called the DE1911G with a 5” barrel, DE1911C with a 4.33” barrel and the DE1911U, 3” barrel in carbon steel and stainless steel. MRI also produces the Big Frame Revolvers, BFR series of all stainless steel, single-action revolvers in numerous calibers, both off the shelf and custom models in two cylinder

sizes, the Mountain Eagle Centerfire rifles and the Magnum Lite Rimfire line in .22LR and .22WMR featuring lightweight graphite barrels and the aluminum Ultra barrel.

## THE PLATFORM

The entire Mark XIX Component System is based on a single platform. With its gas operation, rotating bolt and all-steel construction, this is the heart of the firearm. Once you’ve purchased a Mark XIX Desert Eagle Pistol, you can change the barrel length or the caliber in seconds, if you have the appropriate Mark XIX components on hand.

The Mark XIX (Mark 19) Desert Eagle Pistols offers true interchangeability. Six different pistols are available - .357 Magnum, .44 Magnum or .50 A.E., each with a 6-inch (standard configuration) or a 10-inch barrel that is available as an option in black only. Purchase one pistol and you have the platform to build the other five with a simple switch of components (barrel, magazines and in some cases the bolt assembly). The Mark XIX Desert Eagle .50 A.E. pistols are convertible to the .44 Magnum by simply switching the barrel and magazine (can be done in seconds!). For converting to the .357 Magnum you need to switch the bolt assembly, barrel and magazine (takes a few minutes).





## STAINLESS W / INTEGRAL MUZZLE BRAKE

**.50 AE** | MODEL: **DE50SRMB**

**.44 MAGNUM** | MODEL: **DE44SRMB**

**.357 MAGNUM** | MODEL: **DE357SRMB**

- ▶ Barrel: 6"
- ▶ Length O/A: 10.75"
- ▶ Height: 6.25"
- ▶ Slide Width: 1.25"
- ▶ Weight: 4 lbs. 7 oz. (DE50SRMB), 4 lbs. 8 oz. (DE44SRMB), 4 lbs. 10 oz. (DE357SRMB)
- ▶ Sight: Combat type, Fixed
- ▶ Finish: Brushed Stainless Steel

NEW



## STAINLESS STEEL

**.50 AE** | MODEL: **DE50SR**

- ▶ Barrel: 6"
- ▶ Length O/A: 10.75"
- ▶ Height: 6.25"
- ▶ Slide Width: 1.25"
- ▶ Weight: 4 lbs. 7 oz.
- ▶ Sight: Combat type, Fixed
- ▶ Finish: Brushed Stainless Steel

NEW



## BLACK, ALUMINUM (L5)

**.357 MAGNUM** | MODEL: **DE357L5IMB**

- ▶ Barrel: 5"
- ▶ Length O/A: 9.69"
- ▶ Height: 6.25"
- ▶ Slide Width: 1.25"
- ▶ Weight: 3 lbs. 1.6 oz. / 49.6 oz. with an empty magazine
- ▶ Sight: Combat type, Fixed
- ▶ Finish: Black Hard Coat Alloy Frame, Black Steel Slide and Barrel w/ Integral Muzzle Brake

NEW

NY APPROVED



## BLACK W / INTEGRAL MUZZLE BRAKE

**.50 AE** | MODEL: **DE50IMB**

**.44 MAGNUM** | MODEL: **DE44IMB**

**.357 MAGNUM** | MODEL: **DE357IMB**

- ▶ Barrel: 6"
- ▶ Length O/A: 10.75"
- ▶ Height: 6.25"
- ▶ Slide Width: 1.25"
- ▶ Weight: 4 lbs. 6 oz. (DE50IMB), 4 lbs. 7 oz. (DE44IMB), 4 lbs. 9 oz. (DE357IMB)
- ▶ Sight: Combat type, Fixed
- ▶ Finish: Black Oxide

NEW



## TUNGSTEN

**.50 AE** | MODEL: **DE50TU**

**.44 MAGNUM** | MODEL: **DE44TU**

- ▶ Barrel: 6"
- ▶ Length O/A: 10.75"
- ▶ Height: 6.25"
- ▶ Slide Width: 1.25"
- ▶ Weight: 4 lbs. 6 oz. (DE50TU), 4 lbs. 7 oz. (DE44TU)
- ▶ Sight: Combat type, Fixed
- ▶ Finish: Cerakote Tungsten, Dark Graphite Grey

NEW



## ALUMINUM FRAME (L6)

**.50 AE** | MODEL: **DE50ASIMB**

- ▶ Barrel: 6"
- ▶ Length O/A: 10.75"
- ▶ Height: 6.25"
- ▶ Slide Width: 1.25"
- ▶ Weight: 3 lbs. 7 oz.
- ▶ Sight: Combat type, Fixed
- ▶ Finish: Black Hard Coat Alloy Frame, Stainless Steel Slide and Barrel w/ Black Appointments

NEW

W / STAINLESS STEEL SLIDE



## TIGER STRIPE



<b>.50</b> AE	MODEL: <b>DE50TG-TS</b>
---------------	-------------------------

<b>.44</b> MAGNUM	MODEL: <b>DE44TG-TS</b>
-------------------	-------------------------

<b>.357</b> MAGNUM	MODEL: <b>DE357TG-TS</b>
--------------------	--------------------------

- ▶ Barrel: 6"
- ▶ Length O/A: 10.75"
- ▶ Height: 6.25"
- ▶ Slide Width: 1.25"
- ▶ Weight: 4 lbs. 5.6 oz. (DE50TG-TS), 4 lbs. 7 oz. (DE44TG-TS), 4 lbs. 9 oz. (DE357TG-TS)
- ▶ Sight: Combat type, Fixed
- ▶ Finish: Tiger Stripe Pattern

## BLACK



<b>.50</b> AE	MODEL: <b>DE50</b>
---------------	--------------------

<b>.44</b> MAGNUM	MODEL: <b>DE44</b>
-------------------	--------------------

<b>.357</b> MAGNUM	MODEL: <b>DE357</b>
--------------------	---------------------

- ▶ Barrel: 6"
- ▶ Length O/A: 10.75"
- ▶ Height: 6.25"
- ▶ Slide Width: 1.25"
- ▶ Weight: 4 lbs. 6 oz. (DE50), 4 lbs. 7 oz. (DE44), 4 lbs. 9 oz. (DE357)
- ▶ Sight: Combat type, Fixed
- ▶ Finish: Black Oxide

## POLISHED CHROME



<b>.50</b> AE	MODEL: <b>DE50PC</b>
---------------	----------------------

<b>.44</b> MAGNUM	MODEL: <b>DE44PC</b>
-------------------	----------------------

<b>.357</b> MAGNUM	MODEL: <b>DE357PC</b>
--------------------	-----------------------

- ▶ Barrel: 6"
- ▶ Length O/A: 10.75"
- ▶ Height: 6.25"
- ▶ Slide Width: 1.25"
- ▶ Weight: 4 lbs. 6 oz. (DE50PC), 4 lbs. 7 oz. (DE44PC), 4 lbs. 9 oz. (DE357PC)
- ▶ Sight: Combat type, Fixed
- ▶ Finish: Polished Chrome



## BLACK TIGER STRIPE

<b>.50</b> AE	MODEL: <b>DE50BTS</b>
---------------	-----------------------

<b>.44</b> MAGNUM	MODEL: <b>DE44BTS</b>
-------------------	-----------------------

- ▶ Barrel: 6"
- ▶ Length O/A: 10.75"
- ▶ Height: 6.25"
- ▶ Slide Width: 1.25"
- ▶ Weight: 4 lbs. 6 oz. (DE50BTS), 4 lbs. 7 oz. (DE44BTS)
- ▶ Sight: Combat type, Fixed
- ▶ Finish: Black with Tiger Stripe Pattern

NEW

## WHITE MATTE DISTRESSED

<b>.50</b> AE	MODEL: <b>DE50WMD</b>
---------------	-----------------------

<b>.44</b> MAGNUM	MODEL: <b>DE44WMD</b>
-------------------	-----------------------

- ▶ Barrel: 6"
- ▶ Length O/A: 10.75"
- ▶ Height: 6.25"
- ▶ Slide Width: 1.25"
- ▶ Weight: 4 lbs. 6 oz. (DE50WMD), 4 lbs. 7 oz. (DE44WMD)
- ▶ Sight: Combat type, Fixed
- ▶ Finish: Cerakote™ White Matte Distressed
- ▶ Made in Israel Model

NEW



## G10 GRIPS

BILL HICKS EXCLUSIVE  
GRIM REAPER GRIPS

## WHITE MATTE DISTRESSED

<b>.50</b> AE	MODEL: <b>DE50WMDR</b>
---------------	------------------------

<b>.44</b> MAGNUM	MODEL: <b>DE44WMDR</b>
-------------------	------------------------

- ▶ Barrel: 6"
- ▶ Length O/A: 10.75"
- ▶ Height: 6.25"
- ▶ Slide Width: 1.25"
- ▶ Weight: 4 lbs. 6 oz. (DE50WMDR), 4 lbs. 7 oz. (DE44WMDR)
- ▶ Sight: Combat type, Fixed
- ▶ Finish: Cerakote™ White Matte Distressed
- ▶ Made in Israel Model

NEW



## TITANIUM GOLD

<b>.50 AE</b>	MODEL: <b>DE50TG</b>
---------------	----------------------

<b>.44 MAGNUM</b>	MODEL: <b>DE44TG</b>
-------------------	----------------------

<b>.357 MAGNUM</b>	MODEL: <b>DE357TG</b>
--------------------	-----------------------

- ▶ Barrel: 6"
- ▶ Length O/A: 10.75"
- ▶ Height: 6.25"
- ▶ Slide Width: 1.25"
- ▶ Weight: 4 lbs. 6 oz. (DE50TG), 4 lbs. 7 oz. (DE44TG), 4 lbs. 9 oz. (DE357TG)
- ▶ Sight: Combat type, Fixed
- ▶ Finish: Bright Titanium Gold



## BRUSHED CHROME

<b>.50 AE</b>	MODEL: <b>DE50BC</b>
---------------	----------------------

<b>.44 MAGNUM</b>	MODEL: <b>DE44BC</b>
-------------------	----------------------

<b>.357 MAGNUM</b>	MODEL: <b>DE357BC</b>
--------------------	-----------------------

- ▶ Barrel: 6"
- ▶ Length O/A: 10.75"
- ▶ Height: 6.25"
- ▶ Slide Width: 1.25"
- ▶ Weight: 4 lbs. 6 oz. (DE50BC), 4 lbs. 7 oz. (DE44BC), 4 lbs. 9 oz. (DE357BC)
- ▶ Sight: Combat type, Fixed
- ▶ Finish: Brushed Chrome



## BURNT BRONZE

<b>.50 AE</b>	MODEL: <b>DE50BB</b>
---------------	----------------------

<b>.44 MAGNUM</b>	MODEL: <b>DE44BB</b>
-------------------	----------------------

- ▶ Barrel: 6"
- ▶ Length O/A: 10.75"
- ▶ Height: 6.25"
- ▶ Slide Width: 1.25"
- ▶ Weight: 4 lbs. 6 oz. (DE50BB), 4 lbs. 7 oz. (DE44BB)
- ▶ Sight: Combat type, Fixed
- ▶ Finish: Cerakote Burnt Bronze



## 24K GOLD

<b>.50 AE</b>	MODEL: <b>DE50GO</b>
---------------	----------------------

<b>.44 MAGNUM</b>	MODEL: <b>DE44GO</b>
-------------------	----------------------

<b>.357 MAGNUM</b>	MODEL: <b>DE357GO</b>
--------------------	-----------------------

- ▶ Barrel: 6"
- ▶ Length O/A: 10.75"
- ▶ Height: 6.25"
- ▶ Slide Width: 1.25"
- ▶ Weight: 4 lbs. 6 oz. (DE50GO), 4 lbs. 7 oz. (DE44GO), 4 lbs. 9 oz. (DE357GO)
- ▶ Sight: Combat type, Fixed
- ▶ Finish: 24K Gold

## BLACK, 10" BARREL

<b>.50 AE</b>	MODEL: <b>DE5010</b>
---------------	----------------------

<b>.44 MAGNUM</b>	MODEL: <b>DE4410</b>
-------------------	----------------------

- ▶ Barrel: 10"
- ▶ Length O/A: 14.75"
- ▶ Height: 6.25"
- ▶ Slide Width: 1.25"
- ▶ Weight: 4 lbs. 14 oz. (DE5010), 4 lbs. 13 oz. (DE4410)
- ▶ Sight: Combat type, Fixed
- ▶ Finish: Black oxide

## 10" BARREL AVAILABLE AFTERMARKET



## POLISHED CHROME



CA APPROVED

**.44 MAGNUM** | MODEL: **DE44CAPC**

- ▶ Barrel: 6"
- ▶ Length O/A: 10.75"
- ▶ Height: 6.25"
- ▶ Slide Width: 1.25"
- ▶ Weight: 4 lbs. 6.6 oz.
- ▶ Sight: Combat type, Fixed
- ▶ Finish: Polished Chrome

NEW

## BRUSHED CHROME



CA APPROVED

**.44 MAGNUM** | MODEL: **DE44CABC**

- ▶ Barrel: 6"
- ▶ Length O/A: 10.75"
- ▶ Height: 6.25"
- ▶ Slide Width: 1.25"
- ▶ Weight: 4 lbs. 6.6 oz.
- ▶ Sight: Combat type, Fixed
- ▶ Magazine Capacity: 8 rounds
- ▶ Finish: Brushed Chrome

## BLACK / BURNT BRONZE



CA APPROVED

• Shown DE44CA

**.44 MAGNUM** | MODEL: **DE44CA**

**.44 MAGNUM** | MODEL: **DE44CABB**

- ▶ Barrel: 6"
- ▶ Length O/A: 10.75"
- ▶ Height: 6.25"
- ▶ Slide Width: 1.25"
- ▶ Weight: 4 lbs. 6.6 oz.
- ▶ Sight: Combat type, Fixed
- ▶ Magazine Capacity: 8 rounds
- ▶ Finish: Black Oxide / Cerakote Burnt Bronze

## DESERT EAGLE COMPONENT KIT MODEL: **DEXIX6 / DEXIX6BB**



NEW

One Frame  
One Slide  
Three Calibers

AVAILABLE  
BLACK AND BURNT BRONZE

- ▶ DE50, 6" Barrel, 7 Rounds
- ▶ BAR446, .44 Magnum, 6" Barrel Black
- ▶ BAR3576, .357 Magnum, 6" Barrel Black
- ▶ .357 Magnum Bolt Assembly
- ▶ MAG44, 8 Rounds, .44 Magnum Magazine
- ▶ MAG357, 9 Rounds, .357 Magnum Magazine
- ▶ Shipped in Protective Aluminum Case

## .50 AE & .44 MAGNUM CONVERSION PACKAGE



- ▶ 25 Clam Packs Available
- ▶ 2 Calibers
- ▶ 13 Different Finishes to Match your Desert Eagle Pistol
- ▶ .50 AE / .44 Magnum Magazine
- ▶ .50 AE, 6" Barrel / .44 Magnum, 6" Barrel



Magnum Research®, Inc. (MRI) is recognized by firearm enthusiasts from around the world for producing a long line of iconic and quality products. The Desert Eagle® pistol is the most recognizable of all the firearms from this 30 year old company. Appearing in over 500 motion pictures, TV films and video games, its distinctive appearance is instantly identifiable, as the Desert Eagle® has become a worldwide handgun icon!

Manufacturing of the pistols was done by Israel Military Industries (IMI) until 1995, when MRI shifted production to Saco Defense in Saco, Maine. In 1998, MRI moved manufacturing back to IMI, which later reorganized under the name Israel Weapon Industries (IWI). Both Saco and IMI/IWI were contractors: all of the patents, copyrights and trade marks are property of Magnum Research®, Inc. Since 2009, the Desert Eagle® has been produced at MRI's Pillager, MN facility.

For a limited time only, Magnum Research® will be offering the "classic" Desert Eagle® Pistols produced by IWI in .44 Magnum and .50 AE. The limited production IWI manufactured Desert Eagle® Pistols will utilize the original two piece barrel design, and original "claw type" safeties. Other unique features of the IWI model

include a one piece hard plastic grip with the IWI logo, and a fluted barrel on the .44 Magnum. There are no flutes on the .50 AE model. Both .44 Magnum and .50 AE models will feature the Mark XIX weaver type rail configuration on the top of the barrel allowing use of a wide variety of optical sighting systems. All IWI manufactured Desert Eagle® Pistols will be available in a smooth black durable finish.

Mark XIX Desert Eagle® Pistols and parts produced in the USA and Israel are completely interchangeable on either gun. Barrels are interchangeable between the .44 Magnum and .50 AE models.



• Shown DE44WMD



CLASSIC DESERT EAGLE® PISTOLS IN .50 AE & .44 MAG. MADE IN ISRAEL BY 

COMPARISON:



Soft synthetic rubber grips with MRI logo

Made in USA Model



Hard plastic grip with IWI logo

Original "Claw Type" Safeties

Made in ISRAEL Model

BLACK

- .50 AE** | MODEL: **DE50W**
- .44 MAGNUM** | MODEL: **DE44W**

	.50 AE	.44 MAGNUM
Model	DE50W	DE44W
Caliber	.50 AE	.44 MAGNUM
Barrel Length w/ 6" Barrel	6"	6"
Overall Length w/ 6" Barrel	10.75"	10.75"
Groove Diameter	.500"	.429"
Height	6.25"	6.25"
Weight	4 lbs. 6 oz.	4 lbs. 7 oz.
Sights	Combat type, Fixed	Combat type, Fixed
Sight Radius	8.5"	8.5"
Trigger	Single action, Approx. 4 lb. pull	Single action, Approx. 4 lb. pull
Trigger Reach	2.75"	2.75"
Polygonal Rifling w / Right Hand Twist, 6 lands & grooves	1 turn in 19"	1 turn in 18"
Magazine	7 rounds	8 rounds
Construction	High quality carbon steel frame, Slide and barrel with rail	High quality carbon steel frame, Slide and barrel with rail
Finish	Satin black finish	Satin black finish

Since 2015 marked the 30th anniversary of Magnum Research, it was the perfect time to introduce a new and improved look to the Baby Desert Eagle. The new series is sleeker than the Baby Desert Eagle II and features an upgraded refreshing new design.

The Baby Desert Eagle is known by the industry as having one of the most reliable mechanisms in the world, and this is evident in the new Baby DE III Series as well. It features a precision land and groove rifled

barrel, ambidextrous teardrop-shaped decocking mechanism on the slide, smoother trigger pull, fully interchangeable magazines with all Baby Desert Eagle II models, and a reversible magazine catch for either left- or right-handed shooters. The integral tactical accessory rail makes it ideal for a variety of laser and light accessories.

Magnum Research has also trimmed down the slide and frame making its shape even more like its big brother, the Desert Eagle, and the trimmer



design gives it a lighter weight than previous Baby Desert Eagle II models. The Baby DE III can be purchased in polymer or steel frame, full size or semi-compact, and in 9mm, .40 S&W and .45 ACP calibers. The steel frame and slide are produced from high quality carbon steel with an attractive matte black oxide finish. The Baby DE III can also be purchased in a polymer frame with a black finish.

Other features include a double/single action (DA/SA) trigger with a 12 lb. trigger pull (DA), and 4 lb. for single action. The rifling is right-hand twist, 6 lands and grooves, and combat-type, white three dot fixed sights. The Baby DE III ships with two magazines, a cleaning kit and a hard plastic case.



POLYMER FRAME

### FULL SIZE POLYMER

MODEL: **BE94003RL / BE94133RL**

<b>.40 S&amp;W</b>	<b>10 ROUND</b>	<b>NEW</b>
<b>.40 S&amp;W</b>	<b>13 ROUND</b>	<b>NEW</b>

- ▶ Barrel: 4.43"
- ▶ Length O/A:
- ▶ Height: 5.65"
- ▶ Slide Width: 1.1"
- ▶ Weight: 1.76 lbs
- ▶ Trigger Pull Weight: 12 lbs (DA) / 4 lbs (SA)
- ▶ Sights: Combat type, White three dot, Fixed
- ▶ Construction: Black Polymer Frame and Black Oxide Slide



POLYMER FRAME

### SEMI-COMPACT POLYMER

MODEL: **BE94003RSL / BE94133RSL**

<b>.40 S&amp;W</b>	<b>10 ROUND</b>	<b>NEW</b>
<b>.40 S&amp;W</b>	<b>13 ROUND</b>	<b>NEW</b>

- ▶ Barrel: 3.85"
- ▶ Length O/A:
- ▶ Height: 5.65"
- ▶ Slide Width: 1.1"
- ▶ Weight: 1.62 lbs
- ▶ Trigger Pull Weight: 12 lbs (DA) / 4 lbs (SA)
- ▶ Sights: White Combat type, White three dot, Fixed
- ▶ Construction: Black Polymer Frame and Black Oxide Slide



POLYMER FRAME

### FULL SIZE POLYMER

MODEL: **BE99003RL / BE99153RL**

<b>9MM</b>	<b>10 ROUND</b>	<b>NEW</b>
<b>9MM</b>	<b>16 ROUND</b>	<b>NEW</b>

- ▶ Barrel: 4.43"
- ▶ Length O/A:
- ▶ Height: 5.65"
- ▶ Slide Width: 1.1"
- ▶ Weight: 2.00 lbs
- ▶ Trigger Pull Weight: 12 lbs (DA) / 4 lbs (SA)
- ▶ Sights: White Combat type, White three dot, Fixed
- ▶ Construction: Black Polymer Frame and Black Oxide Slide



POLYMER FRAME

### SEMI-COMPACT POLYMER

MODEL: **BE99003RSL / BE99153RSL**

<b>9MM</b>	<b>10 ROUND</b>	<b>NEW</b>
<b>9MM</b>	<b>16 ROUND</b>	<b>NEW</b>

- ▶ Barrel: 3.85"
- ▶ Length O/A:
- ▶ Height: 5.65"
- ▶ Slide Width: 1.1"
- ▶ Weight: 1.65 lbs
- ▶ Trigger Pull Weight: 12 lbs (DA) / 4 lbs (SA)
- ▶ Sights: White Combat type, White three dot, Fixed
- ▶ Construction: Black Polymer Frame and Black Oxide Slide

### FULL SIZE STEEL

MODEL: **BE45003R**

<b>.45</b> ACP	<b>10</b> ROUND	<b>NEW</b>
----------------	-----------------	------------

- ▶ Barrel: 4.43"
- ▶ Length O/A: 8"
- ▶ Height: 5.38"
- ▶ Slide Width: 0.98"
- ▶ Weight: 2.22 lbs
- ▶ Trigger Pull Weight: 12 lbs (DA) / 4 lbs (SA)
- ▶ Sights: Combat type, White three dot, Fixed
- ▶ Construction: Black Oxide Frame and Slide



STEEL FRAME

### SEMI-COMPACT STEEL

MODEL: **BE45003RS**

<b>.45</b> ACP	<b>10</b> ROUND	<b>NEW</b>
----------------	-----------------	------------

- ▶ Barrel: 3.85"
- ▶ Length O/A: 7.5"
- ▶ Height: 5.38"
- ▶ Slide Width: 0.98"
- ▶ Weight: 2.03 lbs
- ▶ Trigger Pull Weight: 12 lbs (DA) / 4 lbs (SA)
- ▶ Sights: Combat type, White three dot, Fixed
- ▶ Construction: Black Oxide Frame and Slide



STEEL FRAME

### FULL SIZE STEEL

MODEL: **BE94003R / BE94133R**

<b>.40</b> S&W	<b>10</b> ROUND	<b>NEW</b>
----------------	-----------------	------------

<b>.40</b> S&W	<b>13</b> ROUND	<b>NEW</b>
----------------	-----------------	------------

- ▶ Barrel: 4.43"
- ▶ Length O/A: 8"
- ▶ Height: 5"
- ▶ Slide Width: 0.98"
- ▶ Weight: 2.1 lbs
- ▶ Trigger Pull Weight: 12 lbs (DA) / 4 lbs (SA)
- ▶ Sights: Combat type, White three dot, Fixed
- ▶ Construction: Black Oxide Frame and Slide



STEEL FRAME

### SEMI-COMPACT STEEL

MODEL: **BE94003RS / BE94133RS**

<b>.40</b> S&W	<b>10</b> ROUND	<b>NEW</b>
----------------	-----------------	------------

<b>.40</b> S&W	<b>13</b> ROUND	<b>NEW</b>
----------------	-----------------	------------

- ▶ Barrel: 3.85"
- ▶ Length O/A: 7.5"
- ▶ Height: 5"
- ▶ Slide Width: 0.98"
- ▶ Weight: 1.9 lbs
- ▶ Trigger Pull Weight: 12 lbs. (DA) / 4 lbs. (SA)
- ▶ Sights: Combat type, White three dot, Fixed
- ▶ Construction: Black Oxide Frame and Slide



STEEL FRAME

### FULL SIZE STEEL

MODEL: **BE99003R / BE99153R**

<b>9MM</b>	<b>10</b> ROUND	<b>NEW</b>
------------	-----------------	------------

<b>9MM</b>	<b>16</b> ROUND	<b>NEW</b>
------------	-----------------	------------

- ▶ Barrel: 4.43"
- ▶ Length O/A: 8"
- ▶ Height: 5.38"
- ▶ Slide Width: 1.31"
- ▶ Weight: 2.1 lbs
- ▶ Trigger Pull Weight: 12 lbs (DA) / 4 lbs (SA)
- ▶ Sights: Combat type, White three dot, Fixed
- ▶ Construction: Black Oxide Frame and Slide



STEEL FRAME

### SEMI-COMPACT STEEL

MODEL: **BE99003RS / BE99153RS**

<b>9MM</b>	<b>10</b> ROUND	<b>NEW</b>
------------	-----------------	------------

<b>9MM</b>	<b>16</b> ROUND	<b>NEW</b>
------------	-----------------	------------

- ▶ Barrel: 3.85"
- ▶ Length O/A: 5"
- ▶ Height: 5.38"
- ▶ Slide Width: 1.31"
- ▶ Weight: 1.9 lbs
- ▶ Trigger Pull Weight: 12 lbs (DA) / 4 lbs (SA)
- ▶ Sights: Combat type, White three dot, Fixed
- ▶ Construction: Black Oxide Frame and Slide



STEEL FRAME



# NEW UPGRADED design



DESERT EAGLE

1911



Featuring all the timeless style of an American original and sharing the proud heritage of the legendary Desert Eagle, the new .45 ACP 1911 from Magnum Research comes fully equipped with top-of-the-line custom features at a basic model price that blows away the competition.

The Desert Eagle 1911 single action models are available in three barrel lengths: 5", 4.33" and 3". They are shipped with two magazines with extended base pads for positive magazine insertion. The frame is precision cast and machined from high quality steel (aluminum, 3" model) and the slide is machined from solid billets of steel than finished in a matte black or matte stainless. The Desert Eagle 1911 comes loaded with outstanding

features that would cost extra from a custom gunsmith. Some of these features include a high-ride beavertail grip safety, extended magazine release, aluminum trigger with an overtravel stop, stainless steel full-length guide rod, extended thumb safety, enlarged ejection port, beveled magazine well and double-diamond checkered wood grips held in place by stainless steel hex screws.



## DESERT EAGLE® 1911G

MODEL: **DE1911G**

**.45 ACP | 8 ROUND**

- ▶ Barrel: 5.01"
- ▶ Length O/A: 8.63"
- ▶ Height: 5.25"
- ▶ Slide Width: 1.28"
- ▶ Weight: 36.2 oz
- ▶ Trigger Pull Weight: 3-4 lbs
- ▶ Sights: High profile sculptured rear sight, Drift adjustable for windage, Dovetailed front sight blade with horizontal serrations
- ▶ Magazine: Ships with two magazines, 8 rounds
- ▶ Finish: Matte Black



## DESERT EAGLE® 1911GR

MODEL: **DE1911GR**

**.45 ACP | 8 ROUND**

- ▶ Barrel: 5.01"
- ▶ Length O/A: 8.63"
- ▶ Height: 5.25"
- ▶ Slide Width: 1.28"
- ▶ Weight: 38.01 oz
- ▶ Trigger Pull Weight: 3-4 lbs
- ▶ Sights: High profile sculptured rear sight, Drift adjustable for windage, Dovetailed front sight blade with horizontal serrations
- ▶ Magazine: Ships with two magazines, 8 rounds
- ▶ Finish: Matte Black

### EXTRA FEATURES WITHOUT THE EXTRA COSTS:

- ▶ Ships with Two Magazines
- ▶ Skeletonized Hammer
- ▶ Extended Magazine Release
- ▶ Extended Thumb Safety
- ▶ Checkered, Flat Mainspring Housing Machined from Alloy
- ▶ Stainless Steel Full-length Guide Rod
- ▶ Checkered Front Strap - 1911U



## DESERT EAGLE® 1911C

MODEL: **DE1911C**

**.45 ACP | 8 ROUND**

- ▶ Barrel: 4.33" Bushingless barrel
- ▶ Length O/A: 7.87"
- ▶ Height: 5.25"
- ▶ Slide Width: 1.28"
- ▶ Weight: 33.9 oz
- ▶ Trigger Pull Weight: 3-4 lbs
- ▶ Sights: High profile sculptured rear sight, Drift adjustable for windage, Dovetailed front sight blade with horizontal serrations
- ▶ Magazine: Ships with two magazines, 8 rounds
- ▶ Finish: Matte Black



## DESERT EAGLE® 1911U

MODEL: **DE1911U**

**.45 ACP | 6 ROUND**

- ▶ Barrel: 3" Bushingless barrel
- ▶ Length O/A: 6.85"
- ▶ Height: 5"
- ▶ Slide Width: 0.93"
- ▶ Weight: 25.8 oz
- ▶ Trigger Pull Weight: 3-4 lbs
- ▶ Sights: Windage and elevation adjustable rear sight, Dovetailed front sight blade with horizontal serrations
- ▶ Magazine: Ships w/ two magazines, 6 rd
- ▶ Finish: Hard Coat Anodized Alloy Frame, Carbon Steel Slide, Black, Matte Black

DESERT EAGLE

1911



DESERT EAGLE 1911 STAINLESS

MAGNUM RESEARCH





**DESERT EAGLE® 1911G**  
**STAINLESS** MODEL: **DE1911GSS**

**.45 ACP** | **8 ROUND**

- ▶ Barrel: 5.01"
- ▶ Length O/A: 8.63"
- ▶ Slide Width: 1.28"
- ▶ Weight: 36.2 oz
- ▶ Slide Thickness: 0.92"
- ▶ Trigger Pull Weight: 3-4 lbs
- ▶ Sights: High profile sculptured rear sight, Drift adjustable for windage, Dovetailed front sight blade with horizontal serrations
- ▶ Finish: Matte Stainless Steel



**DESERT EAGLE® 1911C**  
**STAINLESS** MODEL: **DE1911CSS**

**.45 ACP** | **8 ROUND**

- ▶ Barrel: 4.33" Bushingless Barrel
- ▶ Length O/A: 7.87"
- ▶ Slide Width: 1.28"
- ▶ Weight: 33.9 oz
- ▶ Slide Thickness: 0.92"
- ▶ Trigger Pull Weight: 3-4 lbs
- ▶ Sights: High profile sculptured rear sight, Drift adjustable for windage, Dovetailed front sight blade with horizontal serrations
- ▶ Finish: Matte Stainless Steel



**DESERT EAGLE® 1911U**  
**STAINLESS** MODEL: **DE1911USS**

**.45 ACP** | **6 ROUND**

- ▶ Barrel: 3" Bushingless Barrel
- ▶ Length O/A: 6.85"
- ▶ Height: 5"
- ▶ Slide Width: 0.93"
- ▶ Weight: 25.8 oz
- ▶ Trigger Pull Weight: 3-4 lbs
- ▶ Sights: Windage and elevation adjustable rear sight, Dovetailed front sight blade with horizontal serrations
- ▶ Finish: Hard Coat Anodized Alloy Frame and Stainless Steel

**EXTRA FEATURES WITHOUT THE EXTRA COSTS:**

- ▶ Ships with Two Magazines
- ▶ Skeletonized Hammer
- ▶ Extended Magazine Release
- ▶ Extended Thumb Safety
- ▶ Checkered, Flat Mainspring Housing made from Aluminum
- ▶ Stainless Steel Full-length Guide Rod
- ▶ Checkered Front Strap, Stainless, U Models



**DESERT EAGLE® 1911C**  
**9MM** MODEL: **DE1911C9**

**9MM** | **9 ROUND**

**NEW**

- ▶ Barrel: 4.33" Bushingless Barrel
- ▶ Length O/A: 7.87"
- ▶ Slide Width: 1.28"
- ▶ Weight: 33.9 oz
- ▶ Slide Thickness: 0.92"
- ▶ Trigger Pull Weight: 3-4 lbs
- ▶ Sights: High profile sculptured rear sight, Drift adjustable for windage, Dovetailed front sight blade with horizontal serrations
- ▶ Finish: Matte Black



**DESERT EAGLE® 1911U**  
**9MM** MODEL: **DE1911U9**

**9MM** | **7 ROUND**

**NEW**

- ▶ Barrel: 3" Bushingless Barrel
- ▶ Length O/A: 6.85"
- ▶ Height: 5"
- ▶ Slide Width: 0.93"
- ▶ Weight: 25.8 oz
- ▶ Trigger Pull Weight: 3-4 lbs
- ▶ Sights: Windage and elevation adjustable rear sight, Dovetailed front sight blade with horizontal serrations
- ▶ Finish: Hard Coat Anodized Alloy Frame, Carbon Steel Slide, Black



Magnum Research's Big Frame Revolver is truly the biggest, finest revolver on the market today. Entirely manufactured in the US and like the legendary Desert Eagle pistol it is designed as a magnum from the ground up. The BFR is all stainless and has a precision grade barrel that delivers unmatched accuracy with lead or jacketed bullets. The BFR is the most powerful production single action gun made and with numerous calibers and two frame sizes to choose from. You can take everything from grouse to grizzly. Choose your chambering and frame size and have your favorite gun dealer locate one of the BFRs for you.

## Short Cylinder Models

- ▶ All weights are approximate since scales may vary.
- ▶ Barrels are stress-relieved.
- ▶ Shipped with rubber grips and scope mount \* (Weaver style)



### 6.5" / 7.5" BARREL BFR SHORT CYLINDER

<b>.454 CASULL</b>	MODEL: <b>BFR454C6</b>	6.5" BARREL
<b>.454 CASULL</b>	MODEL: <b>BFR454C7</b>	7.5" BARREL
<b>.480/.475 LINEBAUGH</b>	MODEL: <b>BFR480-475</b>	6.5" BARREL
<b>.480/.475 LINEBAUGH</b>	MODEL: <b>BFR480-4757</b>	7.5" BARREL
<b>.50 AE</b>	MODEL: <b>BFR50AE6</b>	6.5" BARREL
<b>.50 AE</b>	MODEL: <b>BFR50AE7</b>	7.5" BARREL
<b>.500 JRH</b>	MODEL: <b>BFR500JRH7</b>	7.5" BARREL

### 5" BARREL BFR SHORT CYLINDER

<b>.44 MAGNUM</b>	MODEL: <b>BFR44MAG5</b>
<b>.500 JRH</b>	MODEL: <b>BFR500JRH5</b> 5.5" BARREL

- ▶ Updated Features: One-piece grip, Hammer spur
- ▶ Height: 6" Width: 1.75" Trigger Pull: 3-4 lbs.
- ▶ Sights: Factory-adjustable rear, black front
- ▶ Number of shots: 5
- ▶ Finish: Brushed stainless steel construction

\* All BFR's are shipped with MRI scope mount (Weaver style) included in packaging (except for .45LC/.410) and are drilled and tapped for installation with screws supplied. MRI scope mount may be purchased separately for previously owned BFR's sold by MRI before 12/31/03. All previously owned BFR's will need to be tapped and drilled for MRI scope mount to fit.

Model	.44 MAGNUM	.454 CASULL	
Calibers	.44 Magnum	.454 Casull	
Barrel	5"	7.5"	6.5"
Twist Rate	16	16	
Groove Diameter	0.430	0.451	
OA Length	11.25"	13.75"	12.75"
Weight	4.86 lbs	3.8 lbs	3.7 lbs
Height	6"		
Cylinder Width	1.75"		
Trigger Pull	3-4 lbs		
Finish	Brushed Stainless Steel Construction		
Sights	Factory Black Fixed Front / Rear Adjustable		
Shots	5		



# Long Cylinder Models

- ▶ All weights are approximate since scales may vary.
- ▶ Barrels are stress-relieved.
- ▶ Shipped with rubber grips and scope mount\* (Weaver style)
- ▶ The .410 shot shell / slug cartridge is not compatible with the .45/70 caliber revolvers.

The .45LC/.410 caliber, 7.5" only has modified choke, wrench, and installed vent rib included.  
 The .410 will accept 3" shotgun shells.



Model	.30/30 WIN.		.45 LONG COLT/.410	.45/70 GOV'T		.460 S&W MAGNUM		.500 S&W MAGNUM	
Calibers	.30/30 Win.		.45 Long Colt/.410	.45/70 Gov't		.460 S&W Magnum		.500 S&W Magnum	
Barrel	10"	7.5"	7.5"	10"	7.5"	10"	7.5"	10"	7.5"
Twist Rate	10		20	14		16		15	
Groove Diameter	0.308		0.451	0.458		0.451		0.500	
OA Length	17.5"	15"	15"	17.5"	15"	17.5"	15"	17.5"	15"
Weight	5.3 lbs	5 lbs	4.5 lbs	4.7 lbs	4.3 lbs	4.7 lbs	4.3 lbs	4.7 lbs	4.5 lbs
Height	6"								
Cylinder Width	1.75"								
Trigger Pull	3~4 lbs								
Finish	Brushed Stainless Steel Construction								
Sights	Factory Black Fixed Front / Rear Adjustable								
Shots	5								





### 10" BARREL BFR LONG CYLINDER

**.30/30** WIN | MODEL: **BFR30-30**

**.45/70** GOV'T | MODEL: **BFR45-70**

**.444** MARLIN | MODEL: **BFR444M**

**.450** MARLIN | MODEL: **BFR450M**

**.460** S&W | MODEL: **BFR460SW10**

**.500** S&W | MODEL: **BFR500SW10**



### 7.5" BARREL BFR LONG CYLINDER

**.30/30** WIN | MODEL: **BFR30-307**

**.45/70** GOV'T | MODEL: **BFR45-707**

**.460** S&W | MODEL: **BFR460SW7**

**.500** S&W | MODEL: **BFR500SW7**



### 7.5" BFR 45LC/410 w / VENT RIB

**.45 LC/.410** | MODEL: **BFR45LC-410**

- ▶ BFR45LC-410, 7.5" utilizes a choke, includes installed vent rib
- ▶ BFR45LC-4105, 5.25" does not use a choke
- ▶ No Scope mount included

All BFR's are shipped with MRI scope mount (Weaver style) included in packaging (except for .45LC/.410) and are drilled and tapped for installation with screws supplied. MRI scope mount may be purchased separately for previously owned BFR's sold by MRI before 12/31/03. All previously owned BFR's will need to be tapped and drilled for MRI scope mount to fit.



Comb Height Is Engineered High Enough For Proper Scoped Shooting

Cleaning Hole

Integral Weaver Type Scope Mount Base on Receiver

Patented ULTRA Barrel / Graphite Barrel

Lightweight Polymer Stock

Extended Magazine Release

Ambidextrous Thumbhole Design

Checkering On The Palm Swell Grip

\* Scope is not included

The ULTRA barrel is a patented high tech “tensioned” type barrel featuring black anodized aluminum with stainless breech and muzzle caps. The MLR22ATUT is threaded for a silencer and comes with a thread protector on the threaded muzzle.



## .22LR Rimfire Rifle, 18.5" Ultra Barrel with Threaded Muzzle

<b>.22 LR</b>	MODEL: <b>MLR22ATUT</b>	<b>10</b> ROUND	<b>18.5"</b> BARREL	<b>4.5</b> lbs WEIGHT	<b>36 5/8"</b> LENGTH
---------------	-------------------------	-----------------	---------------------	-----------------------	-----------------------

- ▶ Threaded Muzzle: 1/2 x 28 with thread protector
- ▶ Sights: Integral Scope Base



## .22LR Rimfire Rifle, 18" Ultra Barrel

<b>.22 LR</b>	MODEL: <b>MLR22ATU</b>	<b>10</b> ROUND	<b>18"</b> BARREL	<b>4.5</b> lbs WEIGHT	<b>36 1/8"</b> LENGTH
---------------	------------------------	-----------------	-------------------	-----------------------	-----------------------

- ▶ Sights: Integral Scope Base
- ▶ Stock: Ambidextrous Thumbhole Stock



## .22LR Rimfire Rifle, 17" Graphite Barrel

<b>.22 LR</b>	MODEL: <b>MLR22AT</b>	<b>10</b> ROUND	<b>17"</b> BARREL	<b>4.25</b> lbs WEIGHT	<b>35.5"</b> LENGTH
---------------	-----------------------	-----------------	-------------------	------------------------	---------------------

- ▶ Sights: Integral Scope Base
- ▶ Stock: Ambidextrous Thumbhole Stock



### .22LR BARRACUDA AMERICAN BLACK WALNUT RIFLE

<b>.22</b> LR	MODEL: <b>MLR22WMBW</b>	<b>10</b> ROUND	<b>17"</b> GRAPHITE BARREL	<b>4.33</b> lbs WEIGHT	<b>35.5"</b> LENGTH
---------------	-------------------------	-----------------	----------------------------	------------------------	---------------------

- ▶ Sights: Rail for Weaver Style Rings on Receiver
- ▶ Right Handed Only



### .22LR HOGUE® OVERMOLDED™ RIFLE

<b>.22</b> LR	MODEL: <b>MLR22H</b>	<b>10</b> ROUND	<b>17"</b> GRAPHITE BARREL	<b>4.25</b> lbs WEIGHT	<b>35.5"</b> LENGTH
---------------	----------------------	-----------------	----------------------------	------------------------	---------------------

- ▶ Sights: Rail for Weaver Style Rings on Receiver
- ▶ Stock: Hogue® OverMolded™ Stock



### .22LR TACTICAL BLACK RIFLE

<b>.22</b> LR	MODEL: <b>MLR22TB</b>	<b>10</b> ROUND	<b>17"</b> GRAPHITE BARREL	<b>4.00</b> lbs WEIGHT	<b>35.5"</b> LENGTH
---------------	-----------------------	-----------------	----------------------------	------------------------	---------------------

- ▶ Sights: Rail for Weaver Style Rings on Receiver
- ▶ Stock: Tactical Black Stock



## EXCEPTIONAL ACCURACY



The ULTRA barrel is a patented high tech “tensioned” type barrel featuring black anodized aluminum with stainless breech and muzzle caps. The MLP22BNU is threaded for a silencer and comes with a thread protector on the threaded muzzle.

### .22LR MAGNUM LITE PISTOL Ultra Barrel with Threaded Muzzle

<b>.22 LR</b>	MODEL: <b>MLP22BNU</b>	<b>10</b> ROUND	<b>10”</b> ULTRA BARREL	<b>2.7</b> lbs. WEIGHT	<b>19.5”</b> LENGTH	<b>NEW</b>
---------------	------------------------	-----------------	-------------------------	------------------------	---------------------	------------

- ▶ Threaded Muzzle: ½ x 28 with thread protector
- ▶ Sights: Rail for Weaver Style Rings on Receiver
- ▶ Stock: Barracuda Nutmeg Stock
- ▶ The ULTRA barrel is a patented high tech “tensioned” type barrel featuring black anodized aluminum with stainless breech and muzzle caps. The MLP22BNU is threaded for a silencer and comes with a thread protector on the threaded muzzle.

The .22 Win Mag version has a patented gas system and block under the barrel that taps a small amount of gas through an orifice hole in the barrel. All barrels feature an 11 degree crown.



## .22WMR BARRACUDA AMERICAN BLACK WALNUT RIFLE

<b>.22</b> WMR	MODEL: <b>MLR22WMBW</b>	<b>9</b> ROUND	<b>19"</b> GRAPHITE BARREL	<b>4.45</b> lbs WEIGHT	<b>37.5"</b> LENGTH
----------------	-------------------------	----------------	----------------------------	------------------------	---------------------

- ▶ Sights: Rail for Weaver Style Rings on Receiver
- ▶ Stock: Barracuda American Black Walnut Stock
- ▶ Unique Gas-Assisted Blowback Operation
- ▶ Recommended use: 40 and 50 Grain Bullet Weights
- ▶ Right Handed Only



## .22WMR HOGUE® OVERMOLDED™ RIFLE

<b>.22</b> WMR	MODEL: <b>MLR22WMH</b>	<b>9</b> ROUND	<b>19"</b> GRAPHITE BARREL	<b>4.45</b> lbs WEIGHT	<b>37.5"</b> LENGTH
----------------	------------------------	----------------	----------------------------	------------------------	---------------------

- ▶ Sights: Rail for Weaver Style Rings on Receiver
- ▶ Stock: Hogue® OverMolded™ Stock
- ▶ Unique Gas-Assisted Blowback Operation
- ▶ Recommended use: 40 and 50 Grain Bullet Weights



## .22WMR STAINLESS STEEL HOGUE OVERMOLDED™ RIFLE

<b>.22</b> WMR	MODEL: <b>MLRS22WMH</b>	<b>9</b> ROUND	<b>18"</b> STAINLESS BARREL	<b>7.3</b> lbs WEIGHT	<b>37"</b> LENGTH
----------------	-------------------------	----------------	-----------------------------	-----------------------	-------------------

- ▶ Sights: Rail for Weaver Style Rings on Receiver
- ▶ Stock: Hogue® OverMolded™ Stock
- ▶ Unique Gas-Assisted Blowback Operation
- ▶ Recommended use: 40 and 50 Grain Bullet Weights

The .22 Win Mag rifle is designed and recommended for 40 grain and 50 grain ammo. Firing 30 grain ammo will void the warranty.

## GRAPHITE BARREL CENTER FIRE RIFLE

Our exclusive Mountain Eagle™ Magnum Lite® Graphite Barrel Centerfire Rifle has the extraordinary advantages of our Magnum Lite® graphite barrel. It features a blueprinted Remington® 700 action with an adjustable trigger and either the H-S Precision or Hogue® OverMolded™ stock. Each one is custom built to your specifications. Call MRI Customer Service 218-746-3459 to order a rifle to meet and exceed your performance expectations.



Shown Remington® Long Action with 26" Sport Taper Barrel

### H-S PRECISION STOCK

MODEL: **MLR3006B26, MLR280B26, MLR7MMB26, MLR300WIB26** | **26"** BARREL

MODEL: **MLR3006ST26, MLR280ST26, MLR7MMST26, MLR300WIST26** | **26"** BARREL

MODEL: **MLR3006ST24, MLR280ST24, MLR7MMST24, MLR300WIST24** | **24"** BARREL



### H-S PRECISION VARMINT STOCK

MODEL: **MLRV22250, MLRV223** | **26"** BARREL

Model	H-S PRECISION STOCK		VARMINT STOCK
Calibers	.30-06, .280, 7MM Rem Mag, .300 Win Mag and others		.22/250, .223 and others
Barrel	24" Sport Taper	26" Bull, 26" Sport Taper	26" Bull
OA Length	46.25"	46.25"	46.25"
Weight	116 oz	116 oz	118 oz
Stock	Right Hand Standard, Left Hand Special Order		



H-S PRECISION TACTICAL STOCK

MODEL: **MLRT22250, MLRT300WI, MLRT300WSM, MLRT308, MLRT223** | 26" BARREL



HOGUE<sup>®</sup> OVERMOLDED<sup>™</sup> STOCK

Shown Remington<sup>®</sup> Short Action with 26" Sport Taper Barrel

MODEL: **MLRH308ST26, MLRH300WSMST26, MLRH7WSMST26** | 26" BARREL

MODEL: **MLRH308ST24, MLRH300WSMST24, MLRH7WSMST24** | 24" BARREL

Model	TACTICAL STOCK	HOGUE <sup>®</sup> OVERMOLDED <sup>™</sup> STOCK	
Calibers	.22/250, .300 Win Mag, .300WSM, .308, .223 and others	.308, .300WSM, 7MM WSM and others	
Barrel	26" Bull	24" Sport Taper	26" Sport Taper
OA Length	48.25"	44.5"	46.5"
Weight	146 oz	114 oz	116 oz
Stock	Right Hand Standard, Left Hand Special Order		



## CUSTOMIZE YOUR OWN DESERT EAGLE

W / GOLD APPOINTMENTS



## 5" BFR SC

W / WHITE POLYMER GRIP & ROUNDED GRIP FRAME



## 7.5" BFR SC

W / MRI OCTAGON BARREL & BLACK MICARTA GRIP



## DESERT EAGLE MUZZLE BRAKES

- ▶ .50 AE, .44 Magnum
- ▶ Available Standard & Custom Finishes
- ▶ Factory Installation Only



## MAGNUM LITE ULTRA BARREL / GRAPHITE BARREL



- ▶ 18.5-inch Ultra Barrel Threaded Muzzle with Thread Protector
- ▶ 18-inch Ultra Barrel for 10/22® .22LR
- ▶ ABAR1022 .22LR 17-inch Graphite Barrel for 10/22® .22LR
- ▶ Note: Graphite Barrel cannot be modified to fit a suppressor.

## GLACIER RIDGE

MAGNUM LITE AMBIDEXTROUS THUMBHOLE BLACK POLYMER RIFLE STOCK

- ▶ Engineered replacement stock for the Ruger® 10/22® rimfire rifle.



## CUSTOM OPTIONS FOR BFR

PRECISION CENTER BUILT REVOLVERS

- ▶ Octagon Barrels
- ▶ Fluted Barrels
- ▶ Fluted Cylinders
- ▶ Magnum Eagle Logo on Top Strap
- ▶ Initials on Frame
- ▶ Special Barrel Lengths Under 10"
- ▶ Rounded, Slimmed Grip Frame
- ▶ Special Calibers by Request



10/22® is a registered trademark of Sturm, Ruger® & Co., Inc.

**PARTS**



- |   |  |  |  |
|---|--|--|--|
| <b>.45 ACP</b><br>Kahr TP45<br>Kahr P45<br>Kahr PM45<br>Kahr CT45<br>Kahr CW45<br>Kahr CM45 | <b>.40 S&amp;W</b><br>Kahr T40<br>Kahr TP40<br>Kahr P40<br>Kahr PM40<br>Kahr K40<br>Kahr MK40<br>Kahr CT40<br>Kahr CW40<br>Kahr CM40 | <b>9 MM</b><br>Kahr T9<br>Kahr TP9<br>Kahr P9<br>Kahr PM9<br>Kahr K9<br>Kahr MK9<br>Kahr CT9<br>Kahr CW9<br>Kahr CM9 | <b>.380 ACP</b><br>Kahr P380<br>Kahr CT380<br>Kahr CW380 |
|---|--|--|--|

**PORTED BARRELS**



- 4.0" Ported Barrel (K40 & K40 Covert)
- 4.0" Ported Barrel (P9 & CW9)
- 4.0" Ported Barrel (P40 & CW40)

**STAINLESS STEEL GUIDE ROD**

- Stainless Steel Guide Rod (MK Series)
- Stainless Steel Guide Rod (K9)
- Stainless Steel Guide Rod (K40)
- Stainless Steel Guide Rod (P40 & CW40)
- Stainless Steel Guide Rod (P9 & CW9)
- Stainless Steel Guide Rod (TP45)
- Stainless Steel Guide Rod (T9, T40, TP9 & TP40)
- Stainless Steel Guide Rod (CW380)

**HOLSTERS**



**BELT-SLIDE HOLSTERS**

- DeSantis Belt-Slide, Ballistic Nylon with Thumb Break
- Mitch Rosen Belt-Slide Holster with Thumb Break
- Mitch Rosen Belt-Slide Holster

**IWB HOLSTERS**

- Mitch Rosen IWB
- Don Hume IWB
- Cobra Gunskin IWB

**ANKLE HOLSTERS**

- Galco Ankle Glove
- G & G Ankle Holster CT
- Active Pro Gear Ankle Holster

**POCKET HOLSTERS**

- DeSantis Nemesis Pocket Holster
- Stellar Rigs Inc Kydex Pocket Holster
- Active Pro Gear Ankle Holster



**SHOULDER RIGS**

- GALCO'S Miami Classic
- Cobra Gunskin Z16 Shoulder Rig

**MAGAZINE POUCHES**



- Active Pro Gear Ankle Carrier
- G&G Double Magazine Pouch
- G&G Single Mag Carrier
- Mitch Rosen Double Magazine Carrier
- Mitch Rosen Single Magazine Carrier
- Cordura Single Magazine Carrier
- Double Magazine Belt Loop Pouch

**BAGS**



- DeSantis Gunny Sack
- DeSantis Gunny Sack, Leather
- BAGMASTER Rectangular Pistol
- BAGMASTER Pro-Shooter's Bag
- Galco Defense Planner
- Overnight Bag w/ Handgun Concealment
- Day Bag w/ Handgun Concealment

**MAGAZINES**



.380 ACP, 9mm, .40 S&W, .45 ACP Magazines

## KAHR BRANDED CUTLERY



Kahr Knife  
Kahr Ceramic Knife  
Kahr Spyderco Delica 4 Knives (Black, Blue, Khaki)  
Kahr Black Rose Ceramic Knife

## KAHR BRANDED PRODUCTS



Kahr Patch  
Kahr Counter Pad  
Kahr Sticker  
Kahr Arms Logo Pin  
Kahr Arms Logo Tie Clip  
License Plate  
14K Gold Kahr Pistol Charm  
14K Gold 7.5" Charm Bracelet

## GRIPS



Wood Grips, (Smooth & Checkered)  
Kahr Grips - Soft Polymer (Set) / Nylon (Set)  
Pearce Grip  
Agrip  
Decal Grips (Sand / Rubber)  
Hogue Handall Jr Rubber Grip  
P380 Tiger Stripe Decal Grips

## SIGHTS



MeproLite Sights (Set)  
Trijicon Night Sights (Set)  
Williams Firesights Red (Set) / Green (Set)  
Crimson Trace Sight  
CW Series Fiber Optic Front Sight  
CW/CM Series Trijicon Night Sights  
P380 XS Big Dot Night Sights  
HiViz Red Sights (Front / Rear)  
HiViz Green Sights (Front / Rear)  
CW380 Night Sight Kit



## GUN MAINTENANCE



Kleen Bore Tactical Cleaning Kit  
Miltec Lubricant  
Pro Shot Pistol Kit Multi Caliber  
Pro Shot Universal Rifle/Shotgun Cleaning Kit  
Otis Tactical Cleaning Kit  
Pro-Shot Cleaning Rod Kit  
P380 w/ LCI Magazine Disconnect Tool  
Spring Maintenance Kit for Kahr Pistols

## CAP & BEANIE



Kahr Cap with adjustable buckle  
Kahr Beanie

## KAHR SHIRTS



Kahr T-shirts, Black (M, L, XL, XXL)  
Kahr Pistol T-shirts, Black (S, M, L, XL, XXL)  
Kahr Pink PM9 T-shirt (S, M, L, XL)  
Kahr P380 Pink T-shirt (S, M, L, XL)  
Rhinestone Kahr Logo T-shirt, Black (S, M, L, XL)  
Kahr Polo-Shirts, Short Sleeve (M, L, XL, XXL)  
Kahr Denim Shirts, Light Blue (M, L, XL, XXL)  
Kahr Sweatshirt, Navy (M, L, XL, XXL)  
Kahr Sweatshirt, Black (M, L, XL, XXL)





**PARTS**



**THOMPSON LONG GUNS**

- Thompson 1927A-1
- Thompson T1 SBR
- Thompson M1
- Thompson M1 SBR
- Thompson 1927A-1 "Commando"

**THOMPSON PISTOLS**

- Thompson Pistol
- Thompson 1911 Custom

**AUTO-ORDNANCE LONG GUNS**

- Auto-Ordnance M1 Carbine

**AUTO-ORDNANCE PISTOLS**

- Auto-Ordnance 1911 "WWII Parkerized"

**DISPLAY MODELS**



This Thompson Replica gun is designed to closely imitate the look of the real Tommy Gun! The frame and receiver are machined from solid steel. The buttstock and grips are genuine American walnut and the finish is blued steel. The trigger, safety and magazine catch work the same as the real guns. The bolt handle does not work. Roll markings on the receiver replicate the real guns down to the Thompson bullet logo in the front of the rear sight. This is a replica gun you will be proud to own and display for years to come. It ships with a 30 round or 10 round stick magazine.

- Shown with optional 50 round drum magazine

Shipped directly to consumers.

**HOLSTERS**



**BELT-SLIDE HOLSTERS**

- Crossbreed 1911 Supertuck Holster
- 1911 Cop 3 Slot Holster

**IWB HOLSTERS**

- DeSantis 1911 Inner Piece Holster
- 1911 King of the Range Compact
- 1911 Cobra Shelby IWB

**SHOULDER RIGS**

- 1911 Fieldmaster Holster
- 1911 Modular Shoulder Holster
- Fobus 1911 Shoulder Rig

**CASES**



- Carbine Canvas Case
- 1911 Auto-Ordnance Storage Case Handgun Case, 11" (Soft / Suede)
- T30 Violin Case Thompson Rifle
- T32 Violin Case Thompson Pistol
- Thompson Padded Rifle Case
- Thompson FBI Hardcase
- Thompson Rifle Case

**MAGAZINE POUCHES**



- M1 Carbine 4 Pocket Magazine Pouch
- M1 Carbine Stock Mag Pouch, Repro New
- 1911 Magazine Pouch
- 1911 Single Magazine Pouch
- G&G Double Magazine Pouch (Black / Brown)
- G&G Single Magazine Pouch (Black / Brown)
- M1 Carbine Leather Scabbard
- Thompson 50/10 Round Drum Magazine Pouch
- WWII 5 Pouch Mag Carrier
- WWII 3 Pouch Mag Carrier

**SLINGS**



- M1 Carbine Oiler & Sling Set
- Web Sling For Thompson
- U.S. Thompson SMG Kerr Sling
- Standard Rifle Sling, Black
- Basket Weave Rifle Sling

**REPLACEMENT BARRELS**



- 10.5" Replacement Barrels (Smooth / Finned)



## MAGAZINES



### LONG GUN MAGAZINES

Thompson Stick Magazines (30 Rd / 20 Rd / 10 Rd)  
 Thompson Drum Magazines (100 Rd / 50 Rd / 10 Rd)  
 Thompson Drum Magazine Key  
 Thompson 3rd Hand  
 M1 Carbine Magazines (30 Rd / 15 Rd / 10 Rd)

### 1911 MAGAZINES

1911 Standard Blued Magazine, Removable  
 1911 Standard Blued Magazine, Non-removable  
 1911 Stainless Magazine

## STOCKS, GRIPS & MOUNTS



M1 Carbine 4" Accessory Rail  
 M1 Carbine 2" Accessory Rail  
 M1 Carbine Scope Mount  
 M1 Carbine Paratrooper Stock  
 M1 Carbine Muzzle Cover  
 M1 Wood Handguard  
 1911 Pearce Wrap Grips  
 1911 Checkered Wood Grips  
 1911 Blonde Grips w/ Medallion  
 1911 Custom Grips (Smooth / Checkered)  
 1911 U.S. Logo Wood Grips  
 1911 Aluminum Grips (Deluxe / Tactical / Checkered / Smooth)  
 1911 Bonded Ivory Grips, Smooth  
 Interchangeable Grips (Vertical / Horizontal)

## SIGHTS



M1 Carbine Adjustable Rear Sight  
 1911 Adjustable Fiber Optic Sights

## CUTLERY



Auto-Ordnance Ceramic Knife  
 Thompson Buck Knife  
 Thompson Ceramic Knife

## COLLECTIBLES



Auto-Ordnance Patch  
 Thompson Brass Zippo Lighter  
 Thompson 6 Ounce Flask  
 Thompson Pen  
 Thompson Pin  
 Thompson Pin w/ Drum  
 Thompson Patch  
 Thompson Logo License Plate  
 14K Gold Tommy Gun Charm  
 14K Gold 7.5" Charm Bracelet

## CAP & BEANIE



Auto-Ordnance Cap w/ Adjustable Buckle  
 Auto-Ordnance Beanie  
 Thompson Beanie

## THOMPSON SHIRTS



1911 Pistol T-Shirt, Black (S, M, L, XL, XXL)  
 M1 Carbine T-Shirt, Beige (S, M, L, XL, XXL)  
 Thompson T1SB Gangster T-Shirt (S, M, L, XL, XXL)  
 Thompson M1 WW2 Soldier T-Shirt (S, M, L, XL, XXL)  
 Tommy Gun T-Shirt, Ash (M, L, XL, XXL, XXXL)  
 Thompson Polo Shirt, Short Sleeve (M, L, XL, XXL)  
 Thompson Sweatshirt, Athletic (M, L, XL, XXL, XXXL)  
 Thompson Sweatshirt, Black (M, XXL, XXXL)

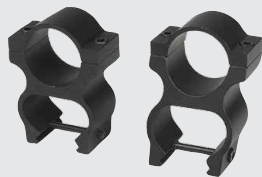


**PARTS**



**DESERT EAGLE MARK XIX PISTOLS**  
Desert Eagle .50 AE

**GUN PARTS**



- Spring Tune-Up Kit
- Slide Release / Safety Lever Kit
- Ring Mounts, 1 Inch, Black
- Scope Mount XIX, Black
- .22LR Bolt Kit
- BFR Scope Mount (Short / Long)
- BFR .410 Vent Rib
- Choke Tube
- Choke Tube Wrench

**BARRELS**



**DESERT EAGLE BARRELS**

- .50 AE 6" Barrels (various custom finishes)
- .44 Magnum 6" Barrels (various custom finishes)
- .357 Magnum 6" Barrels (various custom finishes)
- .50 AE 10" Barrel, Black
- .44 Magnum 10" Barrel, Black
- .50 AE Conversion Package (various custom finishes)
- .44 Magnum Conversion Package (various custom finishes)
- .357 Magnum Conversion Package (various custom finishes)
- .357 Bolt



**MAGNUM LITE BARRELS**

- .22LR Magnum Lite Graphite Barrel
- .22LR Magnum Lite Ultra Barrel w/ Threaded Muzzle

**HOLSTERS**



**DESERT EAGLE HOLSTERS**

- Cordura Shoulder Holster
- Natural Leather Shoulder Holster
- Vertical Shoulder Holster, Black
- Leather Belt Holsters (Black / Brown)
- Cordura Tactical Hip Holster
- Black Nylon Hip Holster
- Black Leather 10 Inch Holster

**BABY DESERT EAGLE HOLSTERS**

- Belt-Slide Holsters (Black / Brown)
- IWB Holster w/ Loops, Black
- Leather IWB Holster, Tan
- Leather Pancake Holster, Tan
- Cortez Nylon Hip Holster
- Versacarry Holster (9mm / .40 S&W / .45 ACP)

**MR EAGLE HOLSTERS**

- Belt-Slide Holsters (Black / Brown)
- IWB Holster w/ Loops, Black
- IWB Clip Holster, Black
- Cortez Nylon Hip Holster
- Versacarry Holster (MR9 / MK40)

**DE1911 HOLSTERS**

- 1911 Fieldmaster Holster
- 1911 Modular Shoulder Holster
- 1911 Inner Piece Holster w/ Thumb Break
- 1911 Belt-Slide Holster, Black
- 1911 Roto Paddle Holster
- 1911 King of the Range

**BFR HOLSTERS**

- Cordura 10" Hip Holster
- Leather Bandolier Holsters (Short Cylinder / Long Cylinder)
- Leather Hip Holsters (6.5-7.5" / 10")

**SIGHTS & SCOPES**



**DESERT EAGLE SIGHTS**

- Millet Sights
- Trijicon Night Sights, Green 3-Dot
- Hi-Viz Fiber Optic DE Front Sights (Short / High)
- Adjustable Fiber Optic Sights

**BABY DESERT EAGLE SIGHT**

- Rail Master Laser Sight

**BFR SIGHTS**

- BFR Hi-Viz Fiber Optic Front Sights (Medium, High, Extra-High)
- BFR Factory Rear Sight
- BFR Millett Adjustable Rear Sight

**SCOPES**

- Mueller Tactical Scope (4.5-14 x 40)
- Mueller APV Scope (4.5-14 x 40AO)
- 40mm Sunshade

**CASES**



- Double Handgun Case
- Handgun Cases (Soft / Suede)
- 11" Handgun Cases (Soft / Suede)
- Desert Eagle Plastic Case
- Walnut Presentation Case
- Walnut Show Case
- Magnum Research Range Bag
- Pro-Shooter's Deluxe Bag
- IWI Desert Eagle Case
- Day Bag w/ Handgun Concealment

## MAGAZINE POUCHES



Natural Leather Double Magazine Pouches (Black / Brown)  
 Natural Leather Single Magazine Pouches (Black / Brown)  
 Black Leather Single Magazine Pouch  
 Desert Eagle Leather Double Magazine Case  
 Nylon Double Magazine Pouch

## MAGAZINES



Desert Eagle Magazines (.50 AE / .44 Magnum / .357 Magnum)  
 Baby Desert Eagle Magazines (9mm / .40 S&W / .45 ACP)  
 MR Eagle Magazines (9mm / .40 S&W)  
 Micro Eagle Magazines (.380 ACP)  
 Desert Eagle 1911 Magazines (.45 ACP)

## COLLECTIBLES



Desert Eagle Patch  
 Desert Eagle Pin  
 Magnum Research Eagle Pin  
 Grim Reaper Buck Knife  
 Magnum Research License Plate  
 "Grim Reaper" Kit, .44 Magnum / .50 AE  
 14K Gold Desert Eagle Pistol Charm  
 14K Gold 7.5" Charm Bracelet

## GRIPS



**DESERT EAGLE GRIPS**  
 Grim Reaper Black Grips  
 "The Bone Yard" Black Grips  
 Black Flame Grips  
 Hogue Rubber Grips  
 Rubber Grip w/ Finger Grooves  
 Wood Grips

**DE1911 GRIPS**  
 1911 Pearce Wrap Grips  
 1911 3D Skull Grips  
 1911 USMC Slim Grips

**BFR GRIP**  
 BFR Hogue Pau Ferro Wood Grips

**MICRO EAGLE GRIP**  
 Micro Eagle Checkered Wood Grips

## GUN MAINTENANCE



5 in 1 Cleaning Tool  
 .50 AE Brush  
 Pro-Shot Cleaning Rod Kit w/ Logo

## AMMUNITION



MRI .50 AE 300 Grain JHP    MRI .50 AE 300 Grain HP/XTP  
 MRI .50 AE 350 Grain JSP

## CAPS & BEANIE



Desert Eagle Caps (Green / Black / Black and White)  
 Desert Eagle Knit Beanie

## SHIRTS



Desert Eagle Black T-Shirts (L, XL, XXL, XXXL)  
 BFR Black T-Shirts (L, XL, XXL, XXXL)  
 Magnum Research Polo Shirts (L, XL, XXL, XXXL)

## VESTS



MRI Fleece Vests w/ Eagle Logo (L, XL, XXL, XXXL)

## JACKETS



MRI Shooting Jackets (L, XL)





CORPORATE HQ:  
105 Kahr Avenue  
Greeley, PA 18425  
Tel: +1 (508) 795-3919 Fax: +1 (570) 685-2222

KAHR ARMS, AUTO-ORDNANCE/THOMPSON FACTORY  
130 Goddard Memorial Drive  
Worcester, MA 01603  
Tel: +1 (508) 795-3919 Fax: +1 (508) 795-7046

MAGNUM RESEARCH FACTORY  
12602 33rd Avenue SW  
Pillager, MN 56473  
Tel: +1 (218) 746-3459 Fax: +1 (218) 746-3097